



奥轩重工
A O X U A N Z G
小巨人数控
LITTLE GIANT CNC



奥轩重工二维码，欢迎关注！

安徽省奥轩重工机械有限公司

ANHUI AOXUAN HEAVY INDUSTRY MACHINE CO.,LTD.

南京小巨人数控机械有限公司

NANJING LITTLE GIANT CNC MACHINERY CO.,LTD.

地址：安徽省马鞍山市博望区

办公地址：芜湖市国家级广告产业园B区7楼706室

电话：0553-7567903 0553-7567909

传真：0553-5964008

邮编：243141

网址：www.ahaxzg.com (中文官网)

www.aoxuanzg.com (英文官网)

Add: Bowang New Zone, Ma'anshan, Anhui province, China

Office Add: Wuhu national advertising industrial park B District 706 floor, room 7

Tel: 0553-7567903 0553-7567909

Fax: 0553-5964008

Zip code: 243141

<http://www.ahaxzg.com> (Chinese)

www.aoxuanzg.com (English)

AOXUAN MACHINE

safe, smart, totally reliable

- TDF FLANGE FORMING MACHINE
- DUCT MANUFACTURING LINE
- PITTSBURGH LOCK MACHINE
- HYDRAULIC IRON WORKER
- SHEARING MACHINE
- PUNCH MACHINE
- PRESS BRAKE



安徽省奥轩重工机械有限公司

ANHUI AOXUAN HEAVY INDUSTRY MACHINE CO.,LTD.

南京小巨人数控机械有限公司

NANJING LITTLE GIANT CNC MACHINERY CO.,LTD.

奥轩重工 · 13935559788

公司简介

Company profile + ————— +

安徽省奥轩重工机械有限公司 位于剪、折生产基地的安徽省马鞍山市，经过多年不懈努力，公司产品主要有：WC67Y、WC67K系列数显、数控板料折弯机，WE67K系列电液伺服数控折弯机；QC12Y、QC12K系列数显、数控液压摆式剪板机，QC11Y、QC11K系列数显、数控液压闸式剪板机；J23系列压力机；W11系列三辊卷板机；Q35系列联合冲剪机等产品，广泛应用于装潢、冶金、船舶、汽车、机械、航空等专业生产领域。

本公司通过了ISO9001:2008国际质量体系认证，拥有进出口企业资格证书及出口质量许可证，公司产品以精湛的设计、合理的价格、优良的品质及快捷的售后服务与技术支持得到了国内外客户的肯定，产品畅销国内二十多个省、市、区，并出口欧洲、美国、日本、东南亚及中东等国家和地区。

公司奉行质量第一，用户至上，诚信为本的宗旨，办一流企业，创一流品牌，树一流形象的企业目标，坚持开拓创新，精益求精的精神，共创辉煌。新世纪，新机遇，奥轩公司与广大客户携手并进，共同发展。

致广大客户：您对品质的苛求是我们努力的动力，愿我们的产品与努力给您成功的喜悦！



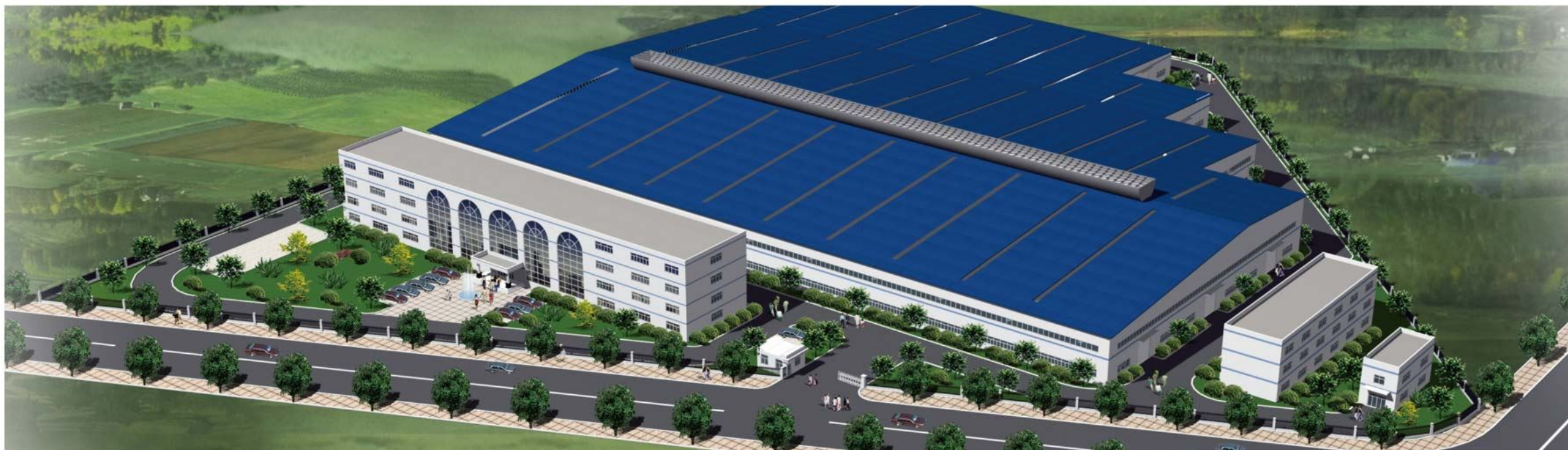
Anhui Aoxuan Heavy Industry Machine Co.,Ltd. is located in maanshan city of anhui province, after years of unremitting efforts, the company's products mainly include:WC67Y,WC67Kseries digital display, numerical control press brake machine,sheet metal bending machine,WE67K series electro-hydraulic servo CNC bending machine;QC12Y,QC12Kseries digital display,numerical control hydraulic tilting cutting machine, QC11Y,QC11Kseries digital display,numerical control hydraulic brake type plate shears,J23 series hydraulic press,W11 series three roller plate roll,Q35 joint shearing machine etc. series products,which are widely used in decoration,metallurgy and shipbuilding, automobile,machinery,aviation and professional production field.

The company has passed ISO9001:2008 international quality system certification, with import and export enterprise qualification certificate and export quality certificate,the company's products with exquisite design,reasonable price,good quality and prompt service and technical support to get the domestic and international customer affirmation,the products sell well in the domestic more than twenty province,city,district,and export to European,America,Japan,southeast Asia and the Middle East and other countries and regions.

Our factory pursue quality first,customer first,honesty of purpose,do first-class enterprise,first-class brand, the business goals of the class image,adhere to innovation,the spirit of excellence,create brilliant.the new century,new opportunities,Aoxuan company with our customers hand in hand, and common development.

All our staff sincerely welcome the domestic and foreign customers to visit us,wish we can have a bright future in cooperation.

To customers: your demand is our driving force,hope our products bring you success!



[加工设备]

Processing equipment + ————— +

精工细作 · 标准化生产

精良的装备和专业化制造，为奥轩重工新产品的规模化增长和品质保证提供了强有力的保障，奥轩现有多个专业产品安装调试车间和精密件加工车间，拥有数控龙门铣床、大型数控镗床、数控卧式加工中心等关键设备若干台。

Sophisticated equipment and professional manufacturing, provides a strong guarantee for the growth of heavy industry scale Aoxuan new products and quality assurance, workshop and precision parts processing workshop Aoxuan existing professional product installation and debugging, with Longmen CNC milling machine, large CNC boring machine, CNC horizontal machining center and other key equipment of taiwan.



以质为本 · 精益求精

质量是产品的“生命”，企业在“做大”的同时，必须“做精、做强”，奥轩重工对产品质量不满足于既定的控制指标，坚持“没有最好，只有更好”的信念，让产品精中求精。

Product quality is the "life", enterprises in the "bigger", must be doing fine, strong, AOXUAN HEAVY INDUSTRY on product quality is not satisfied with the established control indexes, adhere to the "no best, only better" belief, make the product fine refinement.



WC67Y 系列简易数显折弯机

WC67Y SERIES SIMPLE DIGITAL DISPLAY PRESS BRAKE

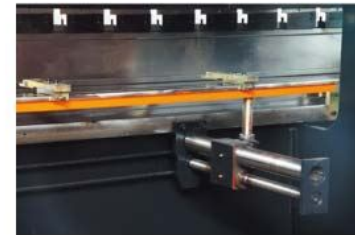


性能特点/ Features:

- 整机钢板焊接结构, 采用振动时效消除内应力, 机器强度高、刚性好。
 - 液压双油缸上传动, 机械挡块, 扭轴同步, 运行平稳可靠, 精度高;
 - 后挡料距离及滑块行程采用电动调节及手动微调方式, 并配有数字显示装置, 使用方便快捷;
 - 上模配有挠度补偿装置, 250吨和长度4000mm以上机床可采用下挠度补偿机构。
- The welding structure of the whole machine adopts the vibration aging to eliminate the internal stress, high strength and good rigidity.
Hydraulic double oil cylinder drive, mechanical block, torsion shaft synchronization, stable and reliable operation, high precision;
After the distance between the block and the slide block stroke using electric adjustment and manual adjustment mode, and equipped with digital display, easy to use and quick;
The upper die with deflection compensation device, 250 tons and the length of 4000mm machine tools can be used under the compensation mechanism.

标准配置

The standard configuration



后挡料 (选配)
Back gauge(Optional)



手动微调
Manual fine tuning



标准模具
Standard upper and down dies

WC67Y&WC67K系列技术参数表 WC67Y/K Series bending machine parameters

型号 Model	公称压力 Nominal Pressure (KN)	工作台长度 Length of Table (mm)	立柱间距 Distance between Housings (mm)	喉口深度 Throat Depth (mm)	滑块行程 Ram stroke (mm)	行程次数 Strokes (min ⁻¹)	最大开启高度 Open Height (mm)	主电机功率 Main motor (kw)	外形尺寸 长×宽×高 Overall Dimensions L×W×H(mm)
WC67Y/K-30/1600	300	1600	1280	200	80	≥16	190	3	1700×900×1650
WC67Y/K-30/2000	300	2000	1280	200	80	≥18	190	3	1700×900×1650
WC67Y/K-40/2500	400	2500	1900	280	100	≥20	320	5.5	2600×1100×1900
WC67Y/K-63/2500	630	2500	2050	300	100	≥12	380	5.5	2605×1725×2355
WC67Y/K-63/3200	630	3200	2670	250	100	≥10	380	5.5	3300×1725×2355
WC67Y/K-80/2500	800	2500	2050	250	140	≥10	395	7.5	2605×1725×2355
WC67Y/K-80/3200	800	3200	2660	250	140	≥10	395	7.5	3300×1725×2405
WC67Y/K-100/2500	1000	2500	2050	320	140	≥8	395	7.5	2600×1800×2540
WC67Y/K-100/3200	1000	3200	2660	320	140	≥8	395	7.5	3290×1740×2400
WC67Y/K-100/4000	1000	4000	3060	320	140	≥8	395	7.5	4090×1740×2500
WC67Y/K-100/5000	1000	5000	3960	320	140	≥8	395	7.5	5100×1740×2800
WC67Y/K-125/3200	1250	3200	2510	320	140	≥8	395	7.5	3450×1740×2450
WC67Y/K-125/4000	1250	4000	3160	320	140	≥8	395	7.5	4090×1740×2450
WC67Y/K-160/3200	1600	3200	2540	330	200	≥6	457	11	3280×1930×2800
WC67Y/K-160/4000	1600	4000	3140	330	200	≥6	457	11	4080×1930×2800
WC67Y/K-160/4500	1600	4500	3300	330	200	≥6	457	11	4580×1930×2800
WC67Y/K-200/4000	2000	4000	3140	330	200	≥3	457	11	4080×1930×2800
WC67Y/K-250/5000	2500	5000	3900	400	200	≥5	560	20	5550×1900×3100
WC67Y/K-300/3200	3000	3200	2500	400	250	≥3	630	19	3750×2200×3100
WC67Y/K-300/4000	3000	4000	3070	400	250	≥3	630	23	4550×2200×3300
WC67Y/K-300/5000	3000	5000	3900	400	250	≥3	630	26	5550×2200×3400
WC67Y/K-300/6000	3000	6000	4900	400	250	≥3	630	30	6550×2200×3500
WC67Y/K-400/4000	4000	4000	3000	400	300	≥2.5	770	26	4550×2600×3500
WC67Y/K-400/5000	4000	5000	3900	400	300	≥2.5	770	30	5550×2600×3700
WC67Y/K-400/6000	4000	6000	4900	400	300	≥2.5	770	36	6550×2600×3800
WC67Y/K-500/4000	5000	4000	3000	450	350	≥2.5	860	37	4550×2800×3700
WC67Y/K-500/5000	5000	5000	3900	450	350	≥2.5	860	46	5550×2800×3800
WC67Y/K-500/6000	5000	6000	4900	450	350	≥2.5	860	55	6500×2800×3800
WC67Y/K-600/6000	6000	6000	4900	450	350	≥2.5	860	60	6550×3000×4200

Sample parameters are subject to change without prior notice! 样本参数如有更改恕不另行通知!



WC67K 系列简易数控折弯机

WC67K SERIES SIMPLE CNC BENDING MACHINE

性能特点/ Features:

- 采用全钢焊接结构，具有足够的强度和刚性；
 - 液压上传动，平稳可靠；
 - 机械挡块，扭轴同步，精度高；
 - 后挡料距离、上滑块行程电动调节，数字显示；
 - 上模配有挠度补偿机构，以保证获得较高的折弯精度。
 - 埃斯顿E21数控系统
 - Y轴和X轴驱动自动控制
- Complete steel-welded structure, with sufficient strength and rigidity;
 - Hydraulic down-stroke structure, reliable and smooth;
 - Mechanical stop unit, synchronous torque, and high precision;
 - Back-gauge distance and upper ram stroke with electric adjustment, and counter display;
 - Upper tool with tension compensating mechanism, in order to guarantee high precision of bending;
 - Eston E21 NC system;
 - X-axis and Y-axis drive automatic control.
- 台达变频器控制后挡料
 - HIWIN滚珠丝杆和光杆定位精度0.02毫米
 - 德国博世力士乐液压
 - 德国EMB油管接头
 - 德国西门子主电机
 - 电器/施耐德电气
 - 液压和电气过载保护
- Delta converter control the backgauge
 - HIWIN ball screw and rod positioning accuracy 0.02 mm
 - Bosch Rexroth hydraulic
 - Germany EMB pipe fittings
 - Siemens main motor
 - Electric / Schneider Electric
 - Hydraulic and electrical overload



标准配置

The standard configuration



可选配数控系统

Optional CNC system



E21

- 高清液晶显示屏，具有中、英文两种语言可选，一页显示编程参数，编写程序时更加方便快捷。
 - X、Y轴智能定位，也可根据需要进行手动调整，去除机械式手摇定位装置。
 - 内置保压时间、卸荷延时设定功能，操作更为简便，无需时间继电器，降低成本。
 - 具有参数一键备份与恢复功能，可根据需要随时恢复参数，降低维护成本。
 - 支持多工步编程，复杂工件可一次加工完成，提高生产效率和加工精度。
 - 面板上所有按键均为微动开关，经过EMC、高低温、振动等严格测试，确保产品的稳定性和使用寿命。
 - 通过CE认证，满足海外市场需要。
- HD LCD display, with both Chinese and English optional page display programming parameters, faster and easier to write programs.
 - X, Y-axis intelligent positioning, can also be manually adjusted as needed to remove the mechanical hand positioning device.
 - Built-in dwell time, unloading delay setting function, the operation easier, without time relay, to reduce costs.
 - With the function of one button backup and restore, always can restore parameters as required to reduce the maintenance costs.
 - Support multi-step programming, complex workpieces can complete a process, improve production efficiency and machining accuracy.
 - All keys on the panel are micro-switches, through EMC, high temperature, vibration and other rigorous testing to ensure product stability and service life.
 - CE certified to meet the needs of overseas markets.

WC67K 系列扭轴伺服数控折弯机

WC67K SERIES TORSION AXIS SERVO CNC BENDING MACHINE

性能特点/ Features:

- 主机采用WC67Y系列液压板料折弯机机构
- 高精度、高效率扭轴同步数控折弯机
- 整机全钢板焊机结构
- 机械扭轴同步控制左右平衡
- 后挡料配高性能伺服电机及驱动
- 精密滚珠丝杆、直线导轨标配
- The main machine adopts the structure of series WC67Y hydraulic press brake
- High precision,high efficiency CNC Torsion Bar Synchro Press Brakes
- Holistic welding structure
- Stabilizes left and right balance with help of the mechanical Torsion Bar
- Backgauge is drove by servo motor and performance
- Ball screw and linear guide



DA-41

- 运用伺服控制技术;
- 4.7"高亮液晶显示屏, 包括中文在内的多国语言界面;
- 模具参数设置, 折弯角度编程;
- 可存储100道程序, 每个程序25个工步;
- 送料可编程, 加工数量计数, 断电记忆, 公英制转换。
- Servo control technology;
- 4.7 "bright LCD display, multi-language interface including Chinese;
- Mold parameters, bending angle programming;
- Store 100 programs, each includes 25 steps;
- Escape materials programmable, counting the processing, power cut memory function, Inch / metric conversion.



可选加经济型数控系统

Optional CNC system



CTP2007

- 产品特性:**
- 7寸高清彩显触摸屏
 - 菜单式编程界面
 - 配备伺服电机
 - CANopen总线控制方式, 完全消除干扰定位误差
 - 支持角度编程, 系统自动计算板材折弯深度
 - 滑块位置控制
 - 后挡料位置控制
 - 保压时间设定
 - 20个程序, 每个程序20工步
 - 软限位功能
 - 断电记忆

- Product Features:**
- 7-inch high-definition touch-screen color display
 - Menu-driven programming interface
 - Equipped with servo motors
 - CANopen fieldbus control mode, completely eliminate the interference positioning error
 - Support angle programming, the system automatically calculates the depth of bending sheet metal
 - Slider position control
 - Backgauge position control
 - Dwell time setting
 - 20 programs, each program including 20 steps
 - Soft limit function
 - Power cut memory



E210

- 高清晰5.6" TFT LCD 显示 640 × 480像素
- 100 个程序储存 每个程序有25个工步
- 角度编程, 自动计算折弯深度
- 模具库: 上模15, 下模15
- 后挡料容差补偿
- I/O 端口柔性配置, 自定义闸组
- 自动寻参, 断电记忆
- X轴定位精度: 0.01mm, Y轴定位精度: 0.01mm

- High-definition 5.6 "TFT LCD display 640 x 480 pixels
- 100 program memory, each program including 25 steps
- The angle programming, automatically calculates the bending depth
- Mold library: the upper die 15 and lower die 15
- Backgauge tolerance compensation
- I / O port configuration flexibility, custom manifolds
- Automatic homing, power cut memory
- X-axis positioning accuracy: 0.01mm, Y axis positioning accuracy: 0.01mm

标准配置

The standard configuration



高精度后挡料
High precision backgauge



德国博世力士乐安全阀
Safety valve



德国EMB油管接头
Hose connector



电气系统
Electrical System



RV减速机工作台面补偿 (选配)
RV reducer motor working table compensation (Optional)

下台面手动挠度补偿 (选配)
Compensation device on workbench (Optional)



快速换模夹装置
Quick mold clamping device

折弯机系列数控系统 (可选配)

Bending machine CNC control system(optional)



DA52s (荷兰DELEM公司)

一页式参数快速编程
导航快捷键
7" 宽屏彩色 TFT
最大4轴控制 (Y1, Y2, 和两附加轴)
工作台按度补偿控制
模具材料产品库
USB外接接口
先进的Y轴控制算法, 既可控制闭环, 也可控制开环
面板式安装结构, 可选悬吊箱

Quick, one page programming
Hotkey navigation
7" widescreen colour TFT
Up to 4 axes (Y1, Y2, and 2 auxiliary axes)
Crowning control
Tool/material/product library
USB, peripheral interfacing
Advanced Y-axis control algorithms for closed loop as well as open loop valves
Panel based controller with optional housing



DA56s (荷兰DELEM公司)

二维图形编程
10.4" LCD TFT 彩显
折弯工序确定
展开长度计算
工作台变形补偿
USB接口
先进的Y轴控制算法, 既可控制闭环, 也可控制开环
伺服控制, 变频控制和A/C交流电机控制

2D graphical programming
10.4" LCD TFT colour display
Bend sequence determination Developed length calculation
Crowning control
USB peripheral interfacing
Servo, frequency inverter and AC control
Advanced Y-axis control algorithms for closed-loop as well as open-loop valves.



DA-65W (荷兰DELEM公司)

1、10.4"彩色液晶显示, Windows操作平台, 内置PLC;
2、二维图形编程, 工件与模具图形绘制, 防撞检测, 自由设定材料参数;
3、折弯压力, 工作台变形补偿, 压底折弯力, 大圆弧折弯, 展开长度自动计算;
4、角度校正数据库, 多国语言选择, 手轮移动所有轴;
5、数据备份、恢复, 支持用户专业应用。

1. Colour display 10" LCD (TFT), basic Windows Application suit, PLC functions
2. 2D Graphical CNC, automatic bend sequence calculation and collision detection
3. Bending force and worktable compensation, counting automatic, operator warning system
4. Angle correction function, selectable languages, hand wheel move all the axes
5. Data backup, user specific application support.



DA-69W (荷兰DELEM公司)

12"彩色液晶显示, Windows操作平台, 内置PLC;
完整Windows组件(互联网, 邮件, PDF浏览器), 集成触摸式鼠标;
二维/三维图形编程, 工件与模具图形绘制, 防撞检测
自由设定材料参数;
折弯压力, 工作台变形补偿, 压底折弯力, 大圆弧折弯, 展开长度自动计算;
角度校正数据库, 多国语言选择, 手轮移动所有轴;
数据备份、恢复, 支持用户专业应用。

12" color LCD display, Windows operating platform, the built-in PLC.
Complete Windows components (internet, mail, PDF browser), integrated touch the mouse.
2d / 3d graphics programming, the workpiece and its dies, graphics drawing, prevent collision detection, set freely material parameters, Bending stress, workbench deformation compensation, pressing the bending strength, bending, launched big arc length automatic computing.
Angle correction database, multi-lingual choice, the handwheel mobile all axis;
Data backup, restore and support our customers professional practice.



DA66T (荷兰DELEM公司)

17"高分辨率TFT真彩显示, 1280 x 1024 点阵, 32位色彩全触摸红外无线式操作, 存储器容量1 GB
产品和模具存储器256 MB, 3D图形加速
集成个性化用户操作面板, USB 闪存存储驱动
实时Windows嵌入式操作系统, 多任务环境, 支持瞬时关机
兼容DELEM系列模块
2D实时比例编程和显示, 2D折弯工序自动计算
自动计算折弯压力, 折弯公差, 工作台变形调节

17" high resolution colour TFT, 1280 x 1024 pixels, 32 bit colour Full touch screen control (IR-touch), Memory capacity 1 GB
Product and tools memory 256 MB, 3D graphics acceleration
Integrated OEM-panel, USB flash memory drive
Real-time embedded Windows® OS, Multitasking environment, Instant Shut Off, Diem Moduys compatible
2D real-scale product programming and visualisation, Automatic bend sequence calculation in 2D
Automatic calculation of Press force, Bend allowance, Crowning adjustment



DA69T (荷兰DELEM公司)

2D和3D触摸式图形编程
3D产品图形编程
17"高分辨率TFT真彩显示
完整的Windows应用程序包
兼容DELEM模块化结构
USB, 外设接口
多任务环境下用户程序应用
角度检测传感器接口

2D and 3D graphical touch screen programming mode
3D visualisation in simulation and production
17" high resolution colour TFT
Full Windows application suite
Diem Moduys compatibility (module scalability and adaptivity)
USB, peripheral interfacing
User specific application support within the controllers multitasking environment
Sensor bending & correction interface



KV S525 (Italy ESA)

单色5.7"LCD显示器 (320X240像素)
实时自动检查的预表式编程模式, 自动计算折弯以及补偿力
所有的程序, 模具, 参数可以保存在本机内存或U盘
提供控制轴及其它辅助功能的编程功能
控制三个轴

Graphic monochrome 5.7" LCD display (320x240 pixels resolution)
Programming of the axes positions in tabular mode with automatic syntactical checks, automatic calculation of the bending and crowning tonnage.
All programs, tools description, parameters can be stored on the internal memory or on USB memory stick. These files can be exchanged with other CNC and PC through USB memory stick.
Selectable and programmable axes and auxiliary functions.
Control 3 axes.



KV S540 (Italy ESA)

液晶彩显10.2" TFT SVGA 抗辐射
交互式2D图形编辑和模具输入
3D显示工件, 模具和机床框架
手动2D图形用于设置最佳的折弯步骤
类似WINDOWS的操作方式, 以制表方式编辑轴的位置, 操作简单, 自动检查, 计算R轴和X轴以及折弯吨位
预设标准PC键盘 (选配)
用户自定义报警功能

LCD color monitor 10.2" TFT, SVGA anti-radiation
Interactive 2D graphics editor and mold input
3D work piece display, mold and machine framework
Manual 2D graph used to set the optimum bending step sequence
Similar to the WINDOWS operating, programming the position of the axis in tabulation; it has the characteristic of simple operation, automatic checking and calculating the R-axis, X-axis, even bending tonnage.
Default standard PC keyboard (optional)
User-defined alarm function

板料折弯力表/ Force Chart for Press Brake

v	4	6	8	10	12	14	16	18	20	24	28	32	36	40	45	50	55	60	65	70	80	90	100	120	
b	2.8	4.24	5.7	7.1	8.5	9.9	11	12.7	14	17	19.8	22.6	25.5	28	31.8	35	38.9	42.4	46	49.5	56.6	63.6	70.7	85	
R	0.7	1	1.3	1.7	2	2.3	2.7	3	3.3	4	4.7	5.3	6	6.7	7.5	8.3	9.2	10	10.8	11.7	13.3	15	16.7	20	
S	0.5	41	27.1																						
	0.6	59	39	29	23																				
	0.8		69.3	52	42	35																			
	1		108	81	65	54	46																		
	1.2			117	94	78	67	59																	
	1.5				146	122	104	91	81.3																
	2					217	186	163	144	130	108														
	2.5						290	254	226	203	169	145	127												
	3								325	293	244	209	183	163											
	3.5									398	332	284	249	221	199	177									
	4										433	371	325	289	260	230	208								
	4.5											470	411	366	329	300	263	239							
	5												508	451	406	360	325	295	271	250					
	6														585	520	468	425	390	360	334	293			
8																832	756	693	640	594	520	462	416		
10																		1083	1000	929	813	722	650	542	
12																					1170	1040	936	780	
14																							1416	1274	1062

Figures in this Chart is based on following parameters: material strength $\sigma_b=450N/mm^2$ and length $L=1m$. Force for material with different strength and length can be calculated proportionally.

本表数值是以材料强度 $\sigma_b=450N/mm^2$ 及长度 $L=1m$ 计算而得, 不同强度的材料及长度所需的折弯力可按相应的比例计算而得。

The contents are subject to change without prior notice! 样本参数如有更改恕不另行通知!

板料折弯力计算方法:

Force Calculation Formula for Press Brake:

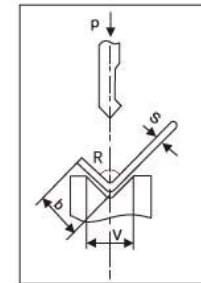
板料折弯力计算方法:

P-折弯力 (千牛) S-板厚 (毫米)

L-板宽 (米)

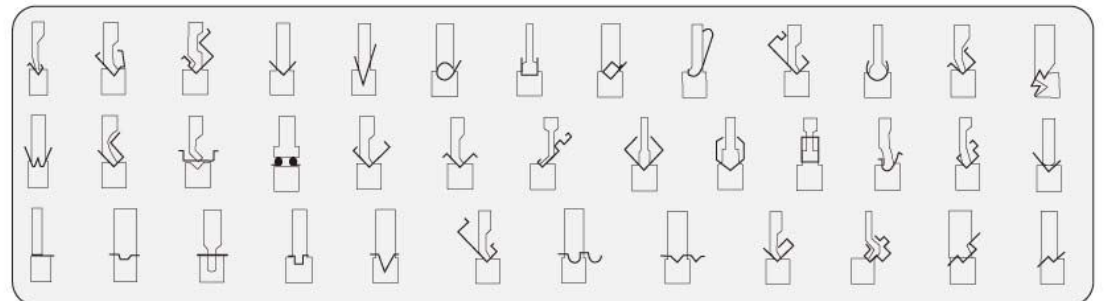
V-下模槽口宽 (毫米)

计算公式: $P = \frac{650S^2L}{V} (\sigma_b=450N/mm^2)$



折弯示意图 Bend schematic

加工工件图 Processing Workpiece Drawing



WE67K 系列电液同步数控折弯机

WE67K SERIES ELECTRO-HYDRAULIC SYNCHRONOUS CNC BENDING MACHINE

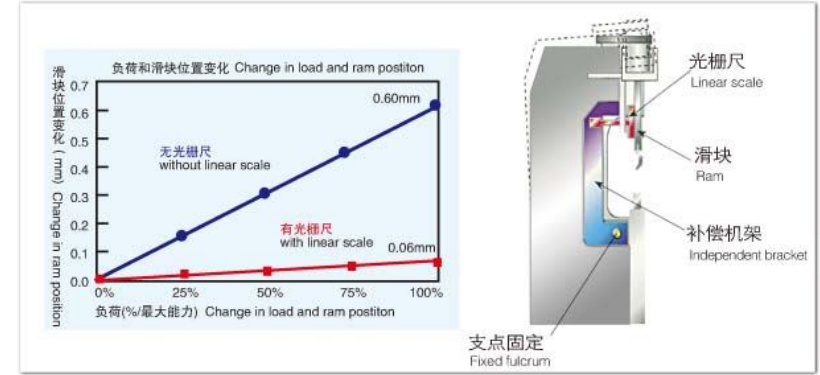
性能特点/ Features:

- 机身采用整体焊接及整体加工结构, 机身主要部件均采用ANSYS有限元分析软件进行分析, 确保了机床的可靠性及整机的精度;
- 两侧主油缸突破了传统机械挡块式折弯机的行程控制方式, 而是采用了德国进口电液伺服阀及进口光栅尺构成的闭环控制方式, 滑块位置反馈精度高, 运行准确平稳, 同步性能好, 折弯精度、滑块的重复定位精度高;
- 后挡料中的功能部件均采用进口件, 确保了后挡料的挡料精度, 并可根据客户需求采用功能更为齐全的多个后挡料轴的后挡料机构;
- 液压系统均采用德国进口的集成式控制系统, 减少了管路的安装, 确保了机床的工作稳定性, 外形简洁美观;
- 机身两侧装有C型板, 高精度光栅尺安装在C型板上, 从而避免了折弯时机身变形对折弯精度的影响;
- 下工作台具有液压挠度自动补偿机构, 实现了无盲区有效补偿, 折弯精度高, 确保长期稳定。

- The machine body adopts the structure of integrally weld and integrated machining, and the main parts of the machine use ANSYS finite element analysis software to analyze, which ensures the reliability of the machine and the precision of the entire machine.
- The main oil cylinders fitted on both sides adopt closed loop control mode which is composed of Germany electro-hydraulic servo valve and imported grating ruler, breaking through the stroke control mode of traditional mechanical stop bending machines, ensuring the high precision of the glide position, the accurate and stable operation, the high precision of bending, and high precision of the repeated positioning of slider.
- The functional components of the back gauge are all imported, ensuring the stopping precision. The machine also can adopt more functional multi-axis blocking according to the customers' requirements.
- The hydraulic system adopts integrated control system imported from Germany, which decreases the installation of pipelines and ensures working stability of the machine tool and conciseness and beauty in appearance.
- C-shaped plates are fitted on both sides of the machine body, and the high precision grating ruler is fitted on the C-shaped plate. Thus to avoid the influences on bending precision arising from distortion of machine body during bending process.
- The lower workbench is fitted with hydraulic automatic deflection compensation mechanism, ensuring effective compensation without blind area and high precision of bending, so that long stability is guaranteed.



采用进口光栅尺, 经久可靠
Import grating, durable and reliable

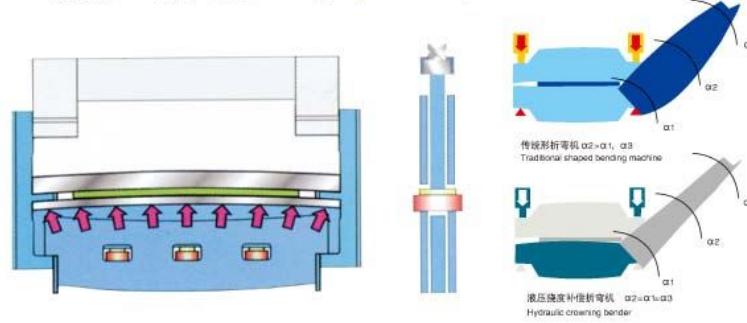


在机床的两端装上两个光栅尺, 他们可测定滑块与工作台的确切距离, 光栅尺与工作台相连, 这样, 立柱的变形不会影响位置检测, 数据立即被反馈至数控系统, 它便可计算并输出伺服控制信号。若有丝毫的定位误差, 数控系统便对两个伺服阀进行必要的校正, 这就确保了工作台与滑块间始终处于平衡状态。

Two linear scales are installed at each end of the machine, they can be used to measure the exact distance between ram and worktable. The linear scale is connected with worktable, in this way, the deformation of columns can't influence the detection of position and the datum will be fed back to the CNC controller instantly, then it can compute and output the controlling signal from servo valve. If there is any positioning error, the CNC controller will adjust the two servo valves that can ensure the worktable and ram at the equilibrium.



工作台液压补偿装置 Stage hydraulic compensation device



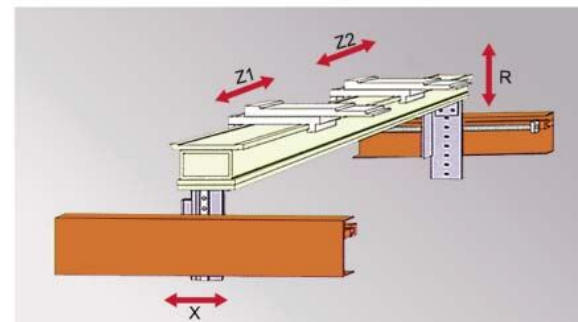
工作原理:

折弯过程中, 滑块与工作台因受力产生一定量的变形, 本机床采用工作台补偿缸系统, 对滑块变形作出相应的补偿量, 使折弯机精度大幅提升。特别适用户加工不锈钢薄板等高精度产品。

Working principle:

The stress can cause the ram and worktable some deformation during the process of bending; the cylinder compensation device can make relevant compensation to the ram deformation, which improves the precision of press brake by a wide margin. It is specially applied to make some high precision products such as stainless steel.

高精度后挡料装置 High precision backgauge device



多轴选择/Multi-Axes Solutions

- 滑块行程: Y1, Y2
- 后挡料: X, R, Z1, Z2
- 补偿轴: V
- 可选系统: DA-52S, DA-56S, DA-66T, DA-69T
- Ram stroke: Y1, Y2
- Backgauge: X, R, Z1, Z2
- Compensation axis: V
- CNC systems: DA-52S, DA-56S, DA-66T, DA-69T

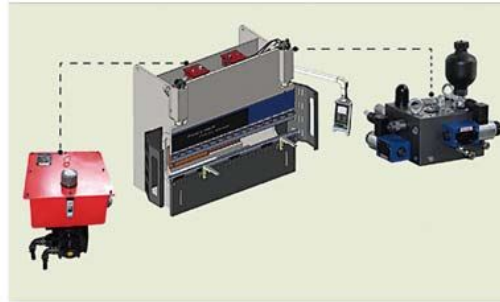
WE67K-ELE 系列双伺服电液同步数控折弯机

WE67K-ELE SERIES ELECTRO-HYDRAULIC SERVO DUAL SYNCHRONOUS CNC BENDING MACHINE



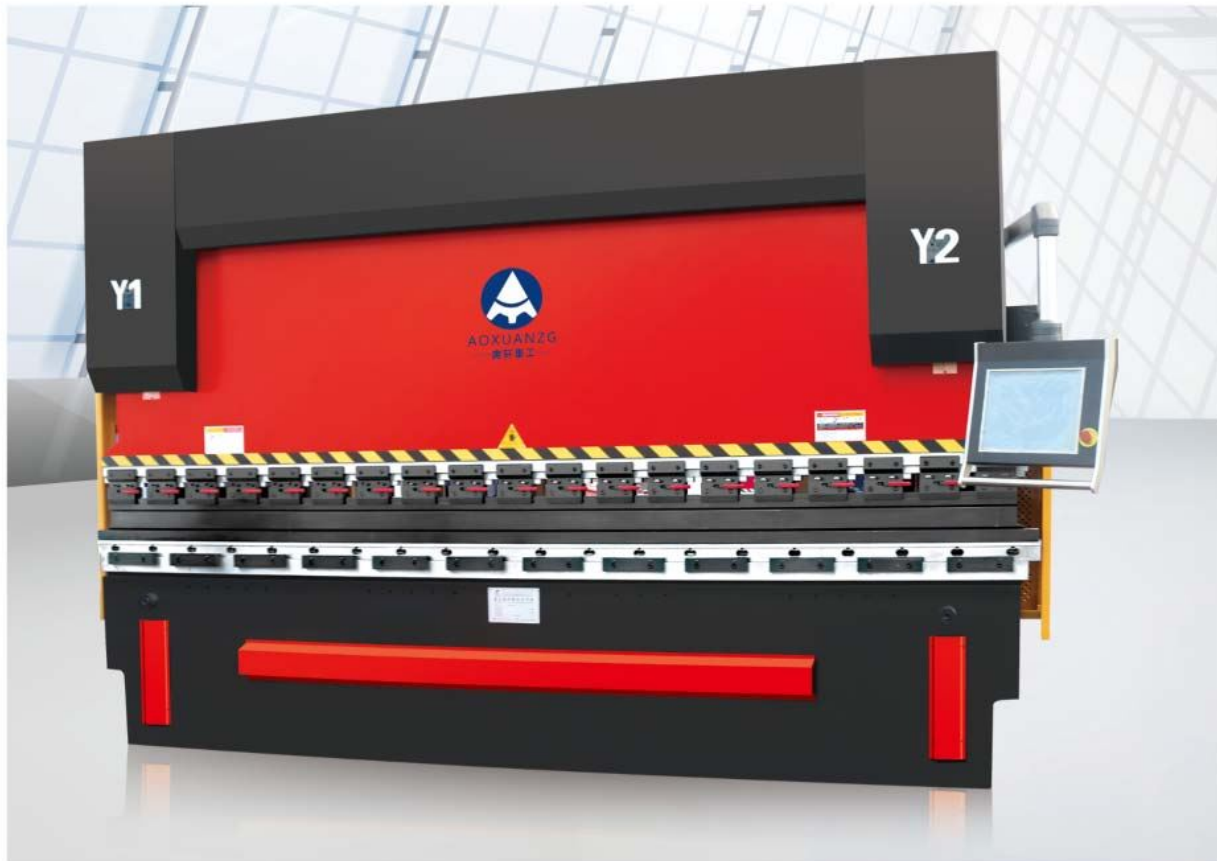
性能特点/ Features:

- 荷兰DELEM DA56S数控系统
- 德国力士乐高性能电液伺服混合驱动泵控系统
- 两侧配RSF光栅尺检测同步设置
- 后挡料配高性能伺服电机及滚珠丝杆
- 采用CNC系统控制的WILA机械式下工作台挠度补偿装置
- 配左右侧防护门及后防护门
- 配直线导轨移动式标准型前托料架
- Holland DELEM DA56S CNC system
- Germany Rexroth has the electro-hydraulic servo driven pump control system
- Synchronous position on both sides with RSF grating detection
- Back gauge with high performance servo motor and ball screw
- The WILA mechanical CNC system control under the table the deflection compensation device
- With a left and a right protective door and rear fender
- Include standard front support with mobile linear guide track



机器型号及控制轴数 (Y1-Y2-X-R-W)
The machine type and axis of control(Y1-Y2-R-W)

- 专业的解决方案, 满足各种应用
- 优质的器件, 保证高可靠性
- 出色的性价比, 成本回收快
- 节能减排, 革命性突破
- Professional solutions to meet a variety of applications
- High-quality components to ensure high reliability
- Excellent value for money, cost recovery fast
- Energy conservation, a revolutionary breakthrough



混合驱动系统的创新特点:

- 泵控技术取代常规阀控技术, 消除节流损失, 没有溢流损失, 节能显著
- 伺服电机在短时间内可显著过载, 实际安装功率仅为理论安装功率的50%
- 油箱容积减小75%, 减小液压油的使用量
- 热平衡温度低, 无需冷却装置, 液压部件寿命延长
- 空闲、快下、保压、返程状态下噪音明显下降, 改善工作环境
- 伺服电机比普通电机制动速度更快, 紧急情况下压力、流量切除快
- 油液颗粒敏感降低从NS7级降为NS9级

Innovative features of the hybrid drive system:

- Pump control technology to replace conventional VRLA technology, eliminating throttling losses, no overflow losses, significant energy saving
- Servo motor in a short time can significantly overload, the actual installed power of only 50% of the theoretical power installation
- Tank volume decreases by 75% to reduce the usage amount of hydraulic oil
- Low thermal equilibrium temperature without cooling devices, hydraulic components life extension
- Free, fast, the packing, the next state return decreased noise, improve the working environment
- Servo motor brake faster than the average, an emergency pressure, flow rate cut soon
- Reduce oil particles from sensitive NS7 grade level dropped NS9



一场绿色折弯的革命正在进行

A bent green revolution is on the way

电液伺服系统/Electro-hydraulic servo system

电液伺服混合驱动泵控系统

Electro-hydraulic servo control system for hybrid drive pump

折弯机

Bending machine

170吨折弯机

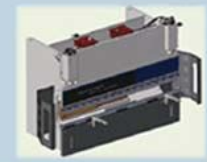
170 tons bending machine

工作周期8h

Duty cycle 8h



原方案: 2x同步块 1x动力单元, 单伺服电机
The original proposal: 2x sync block 1x power unit, single servomotor



优化方案: 2xAlpha DSV1000 4象限泵控系统, 双伺服电机
Optimization program: 2 Alpha DSV1000 4-quadrant pump control system, Double servo motors

工作周期功耗

Duty cycle power

41.7kw.h

-47%

19.8kw.h

液压油箱容量

Hydraulic tank capacity

280L

-42%

2x60L

噪音等级 尖峰/平均/空闲

Noise level peak / average / Idle

87.6/74.6/67.0dB(A)

-11 dB(A)

76.3/67.6/-dB(A)

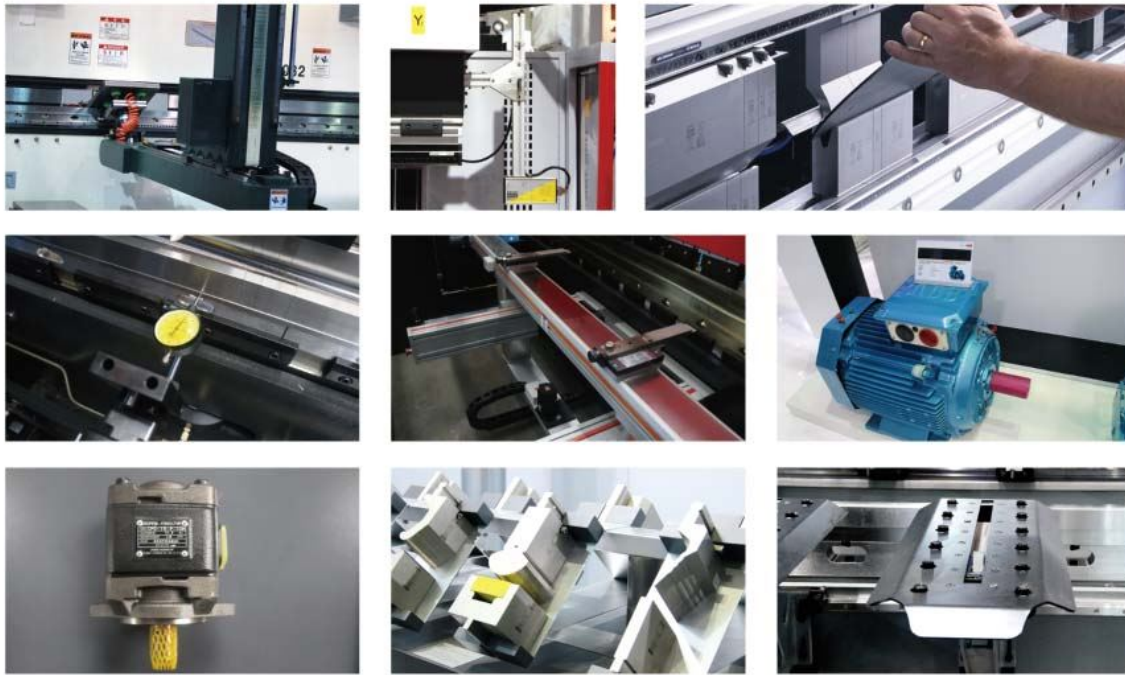
相对比例阀控系统 Relative Proportional Valve System



以电机功率15kw为例, 每天工作8小时可节能56度电, 每月30天节能1680度电, 每年365天节能20160度电。

In motor power 15kw, for example, working eight hours a day can save energy 56 kWh, 30 days of energy-saving 1680 kWh per month, 365 days saving 20,160 kWh per year.

细节展示 Show details



可选配数控系统 CNC system (Optional)



DA52s

一页式参数快速编程
导航快捷键
7" 宽屏彩色TFT
最大4轴控制 (Y1, Y2和两附加轴)
工作台挠度补偿控制
模具材料产品库
USB外设接口
先进的Y轴控制算法, 既可控制闭环, 也可控制开环
面板式安装结构, 可选吊箱

Quick, one page programming
Hotkey navigation
7" widescreen colour TFT
Up to 4 axes (Y1, Y2, and 2 auxiliary axes)
Workbench deflection compensation control
Tool/material/product library
USB, peripheral interfacing
Advanced Y-axis control algorithms for closed loop as well as open loop valves
Panel based controller with optional housing



DA56s

二维图形编程
10.4" LCD TFT 彩屏
折弯工序确定
展开长度计算
工作台变形补偿
USB接口
先进的Y轴控制算法, 既可控制闭环, 也可控制开环
伺服控制, 变频控制和A/C交流电机控制

2D graphical programming
10.4" LCD TFT color display
Bend sequence determination Developed length calculation
Crowning control
USB peripheral interfacing
Servo, frequency inverter and AC control
Advanced Y-axis control algorithms for closed-loop as well as open-loop valves.



DA69T

2D和3D触摸式图形编程
3D产品图形模拟显示
17" 高分辨率TFT真彩显示
完整的Windows应用程序包
兼容DELEM模块化结构
USB, 外设接口
多任务环境下用户程序应用
角度检测传感器接口

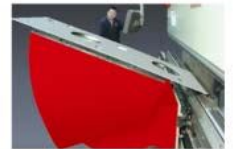
3D and 2D graphical touch screen programming mode
3D visualisation in simulation and production
17" High resolution colour TFT
Full Windows application suite
Delem Modsys compatibility (module scalability and adaptivity)
USB, peripheral interfacing
User specific application support within the controllers
multitasking environment
Sensor bending & correction interface

奥轩数控板材随动托料台

AOXUAN HEAVY INDUSTRY CNC Sheet Follower

采用一流的设计, 伺服马达驱动, 更宽的工作台和更大的负载力, 用于折弯大工件是减轻工人强度, 确保折弯精度。翻动的轨迹和速度与板材折弯时的翻转和速度完全匹配, 此装置为全自动数控的独立运动轴。

Using first-class design, servo motor drive, wider table and greater loading capacity for large workpiece is to reduce the bending strength of workers, ensure bending accuracy. Flip the track and speed of the speed and the sheet bend when turning and exact match, this means for the independence movement of automatic NC axis.



可选配件

Optional Accessories

- ◆ 荷兰Wila液压夹紧装置。
- ◆ 意大利Roller液压夹紧装置。
- ◆ 重望精机能为客户提供世界闻名的荷兰维拉公司和意大利罗里公司的液压夹紧装置。
- ◆ 日本旭光优质机械夹紧装置。

- ◆ Wila Hydraulic Clamping.
- ◆ Roller Hydraulic Clamping.
- ◆ THROUGH GRINDING MACHINE can provide customers with world-renowned Villa Netherlands and Italy Lo Lok Lane's hydraulic clamping device.
- ◆ KYOKKO premium mechanical clamping.



折弯产品图 Bend Pictures



重型加工解决方案

Solutions For Heavy-Duty Forming

ABSOLUTE系列重塑折弯机具有高精度，高速度的特点。

通过高级闭环伺服液压技术，奥轩折弯机的滑块的重复精度和平行精度可达到±0.01mm。

ABSOLUTE series THROUGH GRINDING MACHINE bending machine with high precision, high-speed characteristics.

By repeating the accuracy and precision of advanced parallel and closed loop servo-hydraulic technology, AOXUAN HEAVY INDUSTRY bending machine slider can reach ± 0.01mm.



大吨位单机 (2000Tx9M)
High Tonnage Machine



大吨位单机 (985Tx7.3M)
High Tonnage Machine



大吨位单机 (2500Tx4.8M)
High Tonnage Machine

主要技术参数

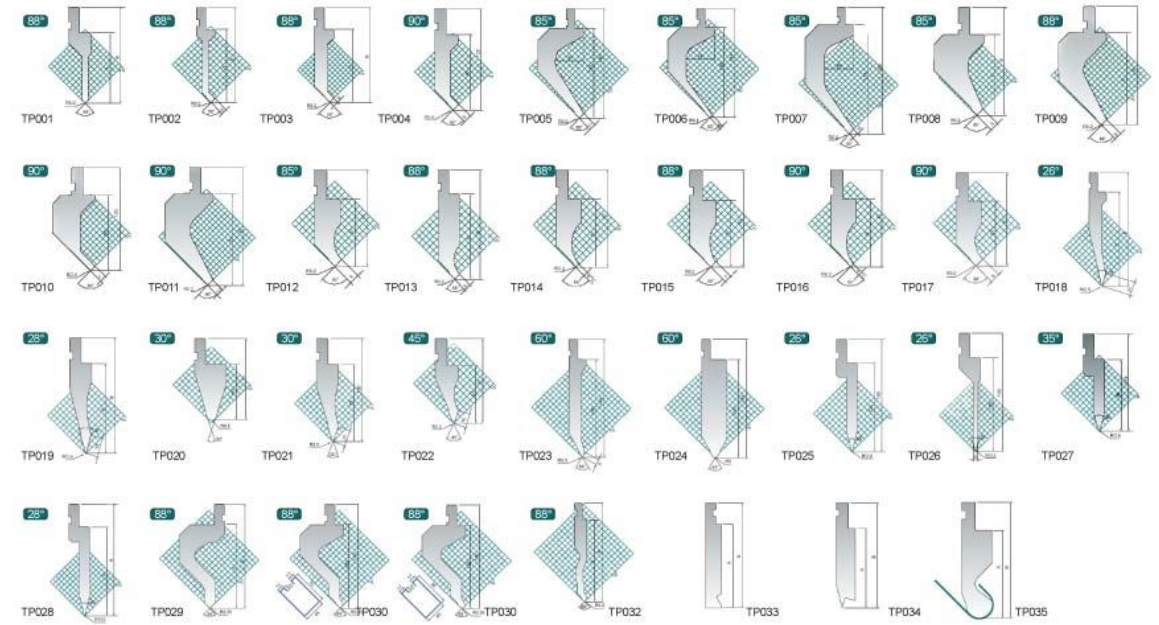
Main Technical Parameters

机床型号	Model	63T/2500	100T/3200	125T/3200	160T/3200	200T/3200	250T/3200	300T/3200	400T/4000	500T/6000	600T/6000	800T/6000	800T/8000	1000T/6000	1000T/8000	1000T/10000
公称力	Nominal Force (kN)	630	1000	1250	1600	2000	2500	3000	4000	5000	6000	8000	8000	10000	10000	10000
折弯长度	Bending Length (mm)	2500	3200	3200	3200	3200	3200	3200	4000	5000	6000	6000	8000	6000	8000	10000
立柱间距	Vertical Distance (mm)	1900	2700	2700	2700	2700	2700	2700	3500	4900	4900	4900	5900	4900	6900	8000
喉口深度	Throat Depth (mm)	350	400	400	400	400	400	400	400	500	500	600	600	600	600	600
滑块行程	Stroke (mm)	170	200	200	200	200	200	200	320	320	320	400	400	400	400	400
装模高度	max height	380	420	420	420	420	420	420	420	600	600	600	600	600	600	600
主电机功率	Main Power (KW)	5.5	7.5	11	11	15	15	22	30	37	45	55	55	2X37	2X37	2X37
控制轴数	Axes	3+1(Y1, Y2, X, V)														
补偿方式	Compensation	液压补偿方式 (Hydraulic Compensation)										机械补偿 (Motorized Compensation)				
后挡料行程	backgauge stroke	500										800				
后挡料速度	backgauge speed	200mm/s														
机身长度	Overall Length (mm)	3100	3500	3500	3500	3500	3500	3500	4500	6500	6500	6500	6500	6500	8500	10500
机身宽度	Overall Width (mm)	1450	1580	1580	1650	1680	1700	1800	2450	2810	2910	2950	2950	3000	3000	3000
机身高度	Overall Height (mm)	2050	2400	2400	2500	2550	2600	2730	3500	4500	5100	5300	5900	5600	6100	5850
重量(约)	Approx. Weight (Ton)	5.8	8.5	9.5	11	14	15.5	16.8	31	53	68	90	120	100	130	150

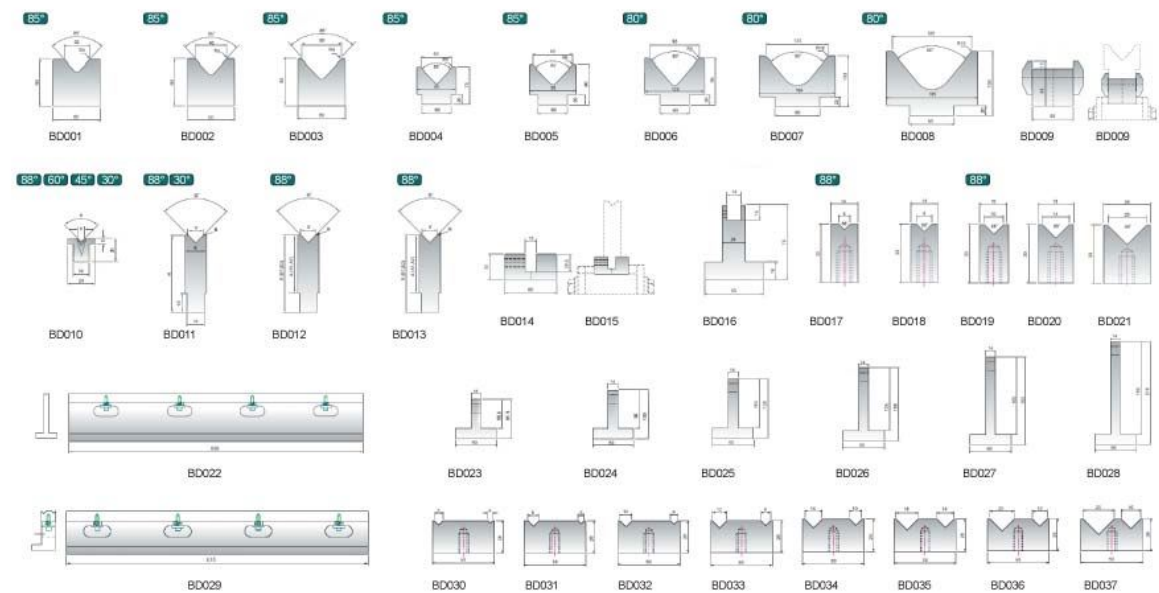
※参数如有变动，恕不另行通知；以上机型可采用双机联动。 Parameters change without notice. All the above models are suitable for tandem.



特制上模 Customized Upper Die



特制下模 Customized Lower Die



QC12Y 系列简易数控剪板机

QC12Y SERIES SIMPLE NC SHEARS MACHINE



SNC-21

SNC-21主要针对摆式剪板机进行控制,对摆式剪板机的后挡料位置进行普通电机的自动定位控制,并根据输入信号的要求,自动对剪板机进行单次/连续的剪切动作控制。参数选择单边或双边定位方式,单边定位可有效消除丝杆传动间隙。系统具有软限位功能。断电位置记忆功能。可根据丝杆螺距、传动比,来设置显示比例因子,亦可通过示教操作功能由数控系统自动计算出显示比例因子,操作十分简便。多步骤编程功能,避免后挡料装置与工件的干涉,减少磨损。设有密码保护。

SNC-21 mainly for the tilting shears control, the pendulum shear machine after block material position of general motors automatic positioning control, and according to the requirements of the input signal, single and continuous shear action control for plate shearing machines. Parameter selection is unilateral or bilateral unilateral positioning can effectively eliminate the gap between the screw drive. System with soft limit function. Power off position memory function. According to the screw pitch, the transmission ratio, to set the display scale factor, also can be taught by the operation function of the numerical control system automatically calculate the display scale factor, the operation is very simple. Multi step programming function, to avoid interference between the workpiece and the workpiece, reduce wear and tear. Password protected.

QC12K 系列伺服数控剪板机

QC12K SERIES SERVO CNC CUTTING MACHINE



可选配数控系统:

Optional Digital System:

南京埃斯顿 E21S, E200S
荷兰DELEM DAC360

Nanjing Eston E21S, E200S
Netherlands DELEM DAC360

QC12Y&QC12K系列配置说明

Equipments for QC12Y&QC12K



济宁泰丰液压阀
China Taifeng Hydraulics



德国BOSCH液压阀
German BOSCH Hydraulics



柱塞泵
Oil Pump



卡套管接头
Pipe Connectors



齿轮泵
China Gear Pump



德国BOSCH泵
BOSCH Pump



刀片间隙调节手轮
Manual Balde Gap
Adjust Wheel



角量尺
Angle Measure



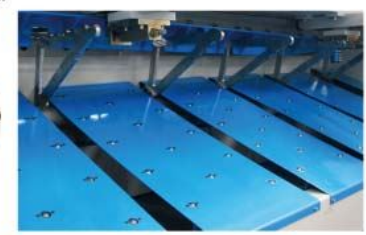
品牌电气元件
Electrical components



光电保护
Light Guards



滚珠丝杆直线导轨
Ball Screw Linear Guide



后气动托料
Backgauge Pneumatic Support

性能简介 Features

QC12Y型:

- 整机钢板焊接结构, 液压传动, 蓄能器回程, 操作方便, 性能可靠, 外形美观, 标配数码控制系统;
- 刀片间隙调整有指示牌指示, 调整轻便迅速;
- 设有灯光对线装置、剪切行程控制装置, 调节方便快捷;
- 工作合装有滚动托料球, 减少板料划伤, 减少摩擦阻力;

QC12K型:

- 主机装配剪板机专用数控系统;
- 后挡料位置实时显示;
- 多步编程功能, 后挡料自动运行连续定位, 实现后挡料位置的自动调节;
- 剪切计数功能, 实时显示剪切数量, 断电记忆后挡料位置、程序及参数;
- 装配精密滚珠丝杆、直线导轨, 确保了定位精度, 机器加工精度高;

机型配置安装说明 Configuration installation instructions

St.=Standard Op.=Optional

名称 Name	QC12Y型 QC12Y Series	QC12K型 QC12K series
1、济宁泰丰阀 China Taifeng Hydraulics	标配 St.	标配 St.
2、齿轮泵 China Brand Gear Pump	选配 Op.	选配 Op.
3、油泵 China Brand Oil Pump	标配 St.	标配 St.
4、电气 Electrical components	标配(国产品牌) St.(China Brand)	标配(合资、进口品牌) St.(Joint-venture/Imported Brand)
5、德国BOSCH阀 BOSCH Valve	选配 Op.	选配 Op.
6、德国BOSCH泵 BOSCH Pump	选配 Op.	选配 Op.
7、气动托料 Pneumatic Support	选配 Op.	选配 Op.
8、滚珠丝杆直线导轨 Ball screw/Linear Guide	选配 Op.	标配 St.
9、伺服电机 Servo Motor	无 /	选配(DAC310标配伺服电机) Op.
10、变频电机 Frequency Motor	无 /	标配 St.
11、光电、激光保护 Light/Laser Guards	选配 Op.	选配 Op.

QC12Y/QC12K系列剪板机参数表
QC12Y/QC12K Series Shearing Machine Parameters

型号 Model	可剪板厚 Cutting Thickness	可剪板宽 Cutting Length	剪切角 Cutting Angel	材料强度 Material Strength	后挡料 调节范围 Stopper Adjust Range	行程次数 Stroke Times	主电机功率 Motor power	外形尺寸 Dimension
TYPE	(mm)	(mm)	(°)	(KN/CM)	(mm)	(次/分)	(kw)	L x W x H(mm)
4 x 2500	4	2500	1° 30'	≤450	20-500	16	5.5	3040 x 1550 x 1550
4 x 3200	4	3200	1° 30'	≤450	20-500	13	5.5	3840 x 1550 x 1550
4 x 4000	4	4000	1° 30'	≤450	20-600	10	5.5	4600 x 1700 x 1700
4 x 6000	4	6000	1° 30'	≤450	20-800	5	7.5	6460 x 2100 x 3200
6 x 2500	6	2500	1° 30'	≤450	20-500	15	7.5	3040 x 1710 x 1620
6 x 3200	6	3200	1° 30'	≤450	20-500	12	7.5	3840 x 1710 x 1620
6 x 4000	6	4000	1° 30'	≤450	20-600	9	7.5	4620 x 1850 x 1700
6 x 5000	6	5000	1° 30'	≤450	20-600	8	7.5	5410 x 1710 x 1620
6 x 6000	6	6000	1° 30'	≤450	20-800	5	11	6480 x 2100 x 2300
8 x 2500	8	2500	1° 30'	≤450	20-500	11	7.5	3040 x 1700 x 1700
8 x 3200	8	3200	1° 30'	≤450	20-500	8	7.5	3860 x 1700 x 1700
8 x 4000	8	4000	1° 30'	≤450	20-600	8	7.5	4640 x 1700 x 1700
8 x 5000	8	5000	1° 30'	≤450	20-600	8	7.5	5400 x 2400 x 2000
8 x 6000	8	6000	1° 30'	≤450	20-800	8	11	6480 x 2100 x 2350
10 x 2500	10	2500	1° 30'	≤450	20-500	10	11	3040 x 1800 x 1700
10 x 3200	10	3200	1° 30'	≤450	20-500	10	11	3860 x 2000 x 1700
10 x 4000	10	4000	1° 30'	≤450	20-600	10	11	4650 x 2100 x 2000
10 x 6000	10	6000	1° 30'	≤450	20-800	10	15	6500 x 2100 x 2300
12 x 2500	12	2500	2°	≤450	20-600	12	18.5	3140 x 2050 x 2000
12 x 3200	12	3200	2°	≤450	20-600	10	18.5	3880 x 2150 x 2000
12 x 4000	12	4000	2°	≤450	20-600	10	18.5	4680 x 2150 x 2100
12 x 5000	12	5000	2°	≤450	20-600	6	18.5	3245 x 1900 x 1900
12 x 6000	12	6000	2°	≤450	20-1000	5	18.5	6900 x 2600 x 2700
16 x 2500	16	2500	2° 30'	≤450	20-600	10	18.5	3140 x 2150 x 2000
16 x 3200	16	3200	2° 30'	≤450	20-600	10	18.5	3880 x 2150 x 2000
16 x 4000	16	4000	2° 30'	≤450	20-800	10	18.5	4650 x 2150 x 2200
16 x 5000	16	5000	2°	≤450	20-1000	6	18.5	5900 x 2600 x 2700
16 x 6000	16	6000	2°	≤450	20-1000	5	22	6900 x 2700 x 2700
20 x 2500	20	2500	3°	≤450	20-800	8	22	3440 x 2300 x 2500
20 x 3200	20	3200	3°	≤450	20-800	8	22	4150 x 2350 x 2700
20 x 4000	20	4000	3°	≤450	20-1000	5	22	4850 x 2600 x 2400
20 x 6000	20	6000	3°	≤450	20-1000	4	22	6700 x 3000 x 3000
25 x 2500	25	2500	3°	≤450	20-1000	8	37	3200 x 2700 x 2900
25 x 3200	25	3200	3°	≤450	20-1000	5	37	4200 x 2400 x 2500
30 x 2500	30	2500	3°	≤450	20-1000	4	37	3300 x 2900 x 3000
30 x 3200	30	3200	3° 30'	≤450	20-1000	4	40	4200 x 2500 x 2600
40 x 2500	40	2500	4°	≤450	20-1000	3	75	3200 x 3300 x 3200
40 x 3200	40	3200	4°	≤450	20-1000	3	90	4300 x 3300 x 3000

The contents are subject to change without prior notice! 样本参数如有更改恕不另行通知!

QC11K 系列液压数控闸式剪板机 QC11K SERIES HYDRAULIC(CNC) GUILLOTINE SHEARS

性能特点/ Features:

- 整机采用全钢焊接结构，振动消除应力，具有很好的刚性与稳定性；
 - 采用先进的液压集成阀块。结构紧凑，减少管路连接，提高了系统的可靠性与易维修性；
 - 串联油缸使机床在剪切时，剪切角不会变动；
 - 蓄能器回程平衡、迅速；刀片间隙手轮调整，准确、迅速、方便；
 - 剪切角可调，减少板料扭曲变形；电动后挡料、位置显示器，方便又准确；
 - 滚动托料球，减少板料划伤，并可减少摩擦阻力。
- The machine body adopts integrally weld structure, and uses the vibration aging technology to eliminate stress, which is typical of excellent rigidity and stability.
 - Advanced hydraulic integrated valve bloke is employed, which decreases the installation of pipe lines in a compact structure, enhancing the reliability and maintainability of the machine.
 - The oil cylinders in series ensure that the shearing angle do not change during the shearing processing.
 - The accumulator returns accurately and rapidly, and the blade clearance can be adjusted in an accurate, rapid and convenient way by the hand wheel.
 - The shearing angel is adjustable, which decreases the distortion of sheet. And the electric backgauge and position display machine make it convenient and accurate.
 - The rolling material support ball decreases scratch of sheet and reduces frictional resistance.



可选配数控系统

Optional Numeric system



DAC360 (荷兰DELEM公司)

1. 面板控制、高亮度LCD显示屏
 2. 后挡料控制，退让功能；
 3. 剪切角控制，剪切间隙控制；
 4. 剪切行程控制，压力控制；
 5. 各轴可手动移动。
- 1.The panel control, high brightness LCD screen;
2. Controlling moving and concession of backgauge;
3. Setting cutting angles and gaps;
4. Managing shearing stroke and pressure;
5. Axis can do manual movement.

DAC310 (荷兰DELEM公司)

1. 运用伺服控制技术；
 2. 128x64像素高亮度液晶显示屏；
 3. 刀口间隙的控制；
 4. 剪切长度限定；
 5. 后挡料实际位置与编程值同时显示。
1. Servo control technology;
2. Bright LCD display, 128x64 pixels;
3. Blades gaps controlling;
4. Cutting length limiting;
5. Backgauge actual and programmed position Displaying.

E21S数控系统

- 后挡料控制；控制普通电机或变频器；智能定位；
双路可编程数字输出；工件计数；
40个程序存储，每个程序25步；单边定位；退让功能；
参数一键备份与恢复；公英制；中/英文。
- Backgauge controlling; General motors or inverter control;
Intelligent positioning; Two programmable digital output;
Artifacts count; 40 program storage, 25 steps for each program;
Unilateral positioning; Concession function;
One key to parameter backup and recovery; Metric system;
Chinese/English.

世界级轴承 World-Class Bearings

设计独具一格的奥轩剪板机的优点还包括使用精密球面轴承，该轴承具有自我调整，自我润滑和免维护的特性，并且零间隙安装在高铬钢轴上。这种设计确保30多年来，奥轩剪板机剪切了不计其数的各种性能的板材，从精密薄板到重型板材。

Individually designed advantages of AOXUAN machine also include the use of precision spherical bearing that has self-adjusting, self-lubricating and maintenance-free characteristics, and zero clearance installation in high chromium steel shaft. This design ensures AOXUAN machine cut countless various properties of the plate, from precision sheet to heavy plate in 30 years.



后挡料抬起机构 Automatic swing-up backstop

奥轩剪板机后挡料的特性还有手动抬起机构（可选配自动抬起），以用于大料避让。

AOXUAN MACHINE also features an automatic swing-up back stop.



优质剪切刀片 Quality Shearing Knives

只有使用最优质的剪切刀片才能保证使用寿命最长，磨刀次数最少。根据剪切能力，既可用高碳钢，高铬钢，又可用高碳钢（耐冲击性）材料加工成刀片，剪切各种规格的板材，如铝合金板，A36钢板，不锈钢板和钛钢等。

Only the highest quality shear knives are used to provide maximum longevity and to minimize resharpening. Depending on the shear capacity, either high carbon, high chrome, or high carbon/shock resisting knives are used for shearing a wide range of metals such as aluminum, A36 plate, stainless and titanium.



小巨人数控
LITTLE GIANT CNC



AOXUANZG
—奥轩重工—

性能特点

- 本系列压力机机身由钢板焊接而成，变形小，刚性好。
- 本系列压力机采用气动组合式摩擦离合器-制动器，寿命长，噪声小，传动平稳。滑块六面导向，导轨精度高，可延长模具寿命，装模高度调节方便可靠，具有急停、寸动、单次和连续操作规范。
- 可选配：PLC电气控制系统、气垫、光电安全保护装置。

Features

- This series of press frame is welded by steel plates, small deformation, good rigidity.
- This series of machine adopts pneumatic friction clutch - brake combination, long service life, low noise, stable transmission. The six surfaces of the guide rail, precision is high, can prolong the life of die, die height adjustment is convenient and reliable, with emergency stop, inching, single and continuous operation specification.
- Optional: PLC electrical control system, air cushion, photoelectric safety protection device.



JH21 系列开式固定台高性能压力机

JH21 SERIES OPEN HIGH PERFORMANCE FIXED PLATFORM PRESS

技术参数 Technical Parameters	单位 Unit	JH21-25	JH21-45	JH21-60	JH21-80	JH21-125	JH21-160	JH21-200	JH21-250	JH21-315	JH21-400	
滑块公称力 Nominal force	KN	250	450	600	800	1250	1600	2000	2500	3150	4000	
公称力行程 Stroke of Nominal force	mm	3	4	4	5	6	6	6	6	7	8	
滑块行程 Stroke of sliding block	mm	80	120	140	160	180	200	250	250	250	270	
行程次数 Number of strokes	固定 fixed 可変 variable	times/min times/min	100 60-100	80 50-80	70 45-70	60 40-60	50 35-50	45 30-45	45 25-45	30 20-30	30 20-30	
封闭高度 Closed height	mm	250	270	300	320	350	400	450	500	500	550	
封闭高度调节量 Closed height adjustment	mm	50	60	70	80	90	100	110	120	120	120	
滑块中心至机身距离 Distance from slider block centre to the frame	mm	210	225	270	310	350	400	430	450	450	490	
立柱距离 Length between columns	mm	450	515	560	610	670	736	910	980	980	1050	
滑块底面尺寸 Bottom Size slider	左右 Left-right 前后 Front-back	mm	360 250	410 340	480 400	540 460	620 520	700 580	880 650	950 700	1020 750	
模柄孔尺寸 Hole size for die handle	直径 Diameter 深度 Depth	mm	40 65	50 60	50 70	50 65	70 90	70 100	70 100	70 130	70 130	
工作台尺寸 Size of worktable	左右 Left-right 前后 Front-back	mm	720 400	825 440	930 520	950 600	1100 680	1170 760	1390 840	1500 880	1700 950	
落料孔直径 Blanking hole diameter	mm	150	150	150	180	200	180	200	200	200	200	
工作台厚度 Table plate thickness	mm	80	110	130	140	155	165	180	190	190	210	
工作台离地面距离 Workbench distance from the ground	mm	780	800	900	900	900	900	1000	1000	1000	1100	
外形尺寸 Dimensions	前后 Front-back 左右 Left-right 高 Height	mm	1496 945 2120	1585 1075 2391	1540 1200 2570	1765 1200 2725	2040 1320 3035	2305 1420 3215	2600 1540 3800	2660 1640 3865	2720 1680 3865	2850 1750 4150
地脚螺栓距离 Bolt distance	前后 Front-back 左右 Left-right	mm	980 690	1075 760	1100 840	1210 920	1430 1040	1665 1140	2020 1360	2100 1460	2140 1500	2260 1570
电动机 Electric motor	型号 Model 功率 Power	KW	3 3	5.5 5.5	7.5 7.5	11 11	15 15	18.5 18.5	22 22	30 30	37 37	
重量 Weight	kg	2450	3550	5150	6450	9550	13600	19200	23200	26600	31600	

The contents are subject to change without prior notice! 样本参数如有更改恕不另行通知!



J23 系列开式可倾压力机 / J21 系列固定台式压力机

J23 SERIES OPEN-TILTING PRESS / J21 SERIES FIXED BENCH PRESS

技术参数 Technical Parameters	单位 Unit	J23-6.3	J23-10	J23-16	J23-25	J23-40	J23-63	J23-80	J21-100	J21-125	J21-160	J21-200	J21-250
滑块公称力 Nominal force	KN	63	100	160	250	400	630	800	1000	1250	1600	2000	2500
公称力行程 Stroke of Nominal force	mm	2	2	2	3	5	5	6	6	8	8	12	14
滑块行程 Stroke of sliding block	mm	35	50	60	70	100	100	120	130	130	160	180	200
行程次数 Number of strokes	times/min	145	130	110	60	55	50	45	43	35	28	28	28
封闭高度 Closed height	mm	150	180	190	210	325	350	370	380	400	400	420	430
封闭高度调节量 Closed height adjustment	mm	30	35	40	50	65	80	90	100	110	120	120	130
滑块中心至机身距离 Distance from slider block centre to the frame	mm	110	130	150	180	250	260	275	310	340	390	390	390
立柱距离 Length between columns	mm	120	140	160	230	270	310	410	520	560	580	680	700
模柄孔尺寸 Hole size for die handle	直径 Diameter	mm	30	35	35	40	50	50	60	60	70	80	100
	深度 Depth	mm	50	50	60	60	70	70	90	120	150	150	170
工作台尺寸 Size of worktable	左右 Left-right	mm	310	360	440	500	680	720	750	900	930	1140	1390
	前后 Front-back	mm	200	240	270	320	460	480	530	630	630	740	820
落料孔直径 Blanking hole diameter	mm	60	80	100	130	150	160	180	180	200	200	220	250
工作台板厚度 Table plate thickness	mm	30	35	40	50	65	80	100	120	130	150	150	150
最大倾斜角度 The maximum tilt angle	°	45	35	35	30	30	20	20					
外形尺寸 Dimensions	左右 Left-right	mm	570	680	730	920	1060	1130	1350	1480	1590	1855	2340
	前后 Front-back	mm	580	630	950	1180	1435	1480	1715	1815	1890	2045	2475
	高 Height	mm	1503	1658	1750	2040	2350	2450	2670	2750	2850	2920	3780
电机功率 Power	功率 Power	KW	0.75	1.1	1.5	2.2	4	5.5	7.5	11	11	15	18.5

The contents are subject to change without prior notice! 样本参数如有更改恕不另行通知!

J21S 系列固定台深喉压力机

J21S SERIES DEEP-THROAT POWER PRESS WITH FIXED BED

技术参数 Technical Parameters	单位 Unit	J21S-10	J21S-16	J21S-25	J21S-40	J21S-63	J21S-80	J21S-100	J21S-125	J21S-160	J21S-200	J21S-250
滑块公称力 Nominal force	KN	100	160	250	400	630	800	1000	1250	1600	2000	2500
公称力行程 Stroke of Nominal force	mm	2	2	3	5	5	6	6	8	8	10	14
滑块行程 Stroke of sliding block	mm	50	60	70	100	100	120	130	130	160	180	200
行程次数 Number of strokes	times/min	130	110	60	55	50	45	43	35	28	28	28
封闭高度 Closed height	mm	180	190	210	325	350	370	380	400	400	420	430
封闭高度调节量 Closed height adjustment	mm	35	40	50	65	80	90	100	110	120	120	130
滑块中心至机身距离 Distance from slider block centre to the frame	mm	300	500	500	500	500	500	710	710	800	800	800
立柱距离 Length between columns	mm	140	160	230	270	310	410	520	560	580	680	700
模柄孔尺寸 Hole size for die handle	直径 Diameter	mm	35	35	40	40	50	60	60	70	80	100
	深度 Depth	mm	50	60	60	70	70	90	120	150	150	170
工作台尺寸 Size of worktable	左右 Left-right	mm	360	440	500	680	720	750	900	930	1140	1390
	前后 Front-back	mm	240	270	320	460	480	530	630	630	740	820
落料孔直径 Blanking hole diameter	mm	80	100	130	150	160	180	180	200	200	220	250
工作台板厚度 Table plate thickness	mm	35	40	50	65	80	100	120	130	150	150	150
外形尺寸 Dimensions	左右 Left-right	mm	700	750	950	1080	1150	1370	1510	1600	1890	2360
	前后 Front-back	mm	820	1330	1520	1695	1720	1985	2235	2250	2480	2895
	高 Height	mm	1658	1750	2040	2350	2450	2670	2750	2850	2920	3780
电机功率 Power	功率 Power	KW	1.1	1.5	2.2	4	5.5	7.5	11	11	15	18.5

The contents are subject to change without prior notice! 样本参数如有更改恕不另行通知!



Y41 系列单柱校正压装液压机

Y41 SERIES SINGLE COLUMN STRAIGHTENING PRESS HYDRAULIC MACHINE

性能与特点

- 本系列为单柱校正液压机，用途十分广泛，适用于轴类件的校正；轴套件的压装；板件的弯曲、压印、拉伸以及塑料、粉末制品的压制等工艺。
- 液压机可用脚踏开关操作，压力可调，行程可以控制，操作简便，可靠。

Performance

- Single column adjusting press-assembly hydraulic press is widely used in adjusting, metal bending, pressing and so on.
- This machine can be controlled by foot pedal switch, pressure is adjustable and stroke can be controlled easily and reliability.

技术参数 Specification	单位 Unit	Y41-40	Y41-63	Y41-100	Y41-160	Y41-200	Y41-250	Y41-315	Y41-400
公称力 Nominal force	KN	400	630	1000	1600	2000	2500	3150	4000
喉口深度 Throat depth	mm	320	320	340	325	350	400	400	450
最大开口高度 Max Height	mm	700	700	900	1000	1000	1000	1100	1200
压头行程 Slide stroke	mm	500	500	500	500	600	600	600	710
工作台尺寸 Table area	左中L-R	mm	580	580	750	750	800	850	1000
	前后F-B	mm	560	560	630	630	650	700	800
	空程下行 Descent	mm/s	48	38	38	20	25	60	65
压头速度 Speed of slide	工作 Pressing	mm/s	12	10	10	8	4	3.7	4
	回程 Return	mm/s	135	95	118	100	65	80	65
	左中L-R	mm	900	930	1200	1200	1300	1200	1500
外形尺寸 Overall dimension	前后F-B	mm	1500	1600	1600	1700	1900	2000	2100
	高度 H	mm	2400	2600	2900	3100	3400	3500	3750
	工作台面距地面高度 Table height above floor	mm	650	650	700	650	700	700	600
电动机功率 Main motor power	KW	5.5	7.5	11	15	15	15	22	22

The contents are subject to change without prior notice! 样本参数如有更改恕不另行通知!



Y32 系列四柱式液压机

Y32 SERIES 4-COLUMN HYDRAULIC PRESS

性能特点

- 本机器适用于可塑性材料的压制工艺，如冲裁、弯曲、翻边、薄板拉伸等。也可从事于校正、压装、砂轮成型、冷挤金属零件成型、塑料制品及粉末制品的压制成型工艺。
- 本机器具有独立的动力机构和电气系统，并采用按钮集中控制，可实现调整、手动和半自动三种操作方式。
- 本机器的工作压力、压制速度、行程范围均可根据工艺需要进行调整。并能完成定压及定程成型两种工艺方式，定压成型之工艺方式在压制后具有保压和延时自动回程动作。
- Y32型压机除具有上述功能外，顶出缸具有顶出、延时、自动退回。

Features

- The press Y32 is applicable to compression of plastic materials. For example, powder and plastics products forming and heat/cold metal extrusion, stamping, bending, edge-folding, straightening, depressed mounting and etc.
- Independent drive structures and electrical devices insure reliable operation with centered control buttons. Adjustment, manual operation and semi-automatic operation, three modes are provided respectively for your choice.
- The working pressure, pressing speed, unload-descending speed and decelerated pressing speed can be respectively adjusted in requirements. By preset, knock-out and drawing can be taken out with pressure-dependent or distance-dependent of die.
- In the case of pressure-dependent movement, the main cylinder of Y32 type press initiates pressure-holding time delay and automatic return.



液压阀

技术参数 Specification	单位 Unit	Y32-63	Y32-100	Y32-160	Y32-200	Y32-315	Y32-400	Y32-500	Y32-630	Y32-800	Y32-1000	Y32-1250	Y32-1600	Y32-2000	Y32-2500	Y32-3000
公称力 Nominal force	KN	630	1000	1600	2000	3150	4000	5000	6300	8000	10000	12500	16000	20000	25000	30000
顶出力 Knockout force	KN	160	250	250	400	630	630	1000	1600	2000	2000	2000	2500	3150	4000	5000
开口高度 Max Height	mm	800	800	1000	1120	1250	1250	1500	1500	1500	1600	1500	1600	1800	2000	2000
滑块行程 Slide stroke	mm	500	500	500	710	800	800	900	900	900	1000	900	1000	1200	1200	1200
顶出行程 Knockout stroke	mm	200	200	200	250	300	300	360	360	360	450	400	450	450	500	500
滑块速度 Speed of slide	空程下行 Descent	mm/s	40	38	80	80	120	100	100	90	90	85	85	80	80	100
	工作 Pressing	mm/s	7	10	6-15	5-12	5-12	4-10	4-10	5-12	5-12	4-10	4-10	4-10	4-10	5-12
	回程 Return	mm/s	580	70	80	70	65	50	50	60	90	100	85	85	60	60
工作台尺寸 Table area	左中L-R	mm	550	630	800	900	1200	1200	1400	1600	2000	2000	2500	2500	3000	4000
	前后F-B	mm	630	630	800	900	1200	1200	1400	1600	1800	2000	2000	2000	2500	2600
工作台面距地面高度 Table height above floor	mm	700	700	550	550	700	700	715	500	300	300	200	200	200	200	200
外形尺寸 Overall dimension	左中L-R	mm	2370	2200	2400	2450	2830	2850	3300	3600	4800	7010	5890	6500	6870	7630
	前后F-B	mm	900	1200	1300	1300	1500	1500	1500	1800	2854	3000	3450	3900	2500	5000
	高度 H	mm	2770	2800	3200	3650	4300	4400	5400	5400	5400	5740	6980	7500	7500	7840
电动机总功率 Main motor power	KW	7.5	11	15	15	22	22	22	44	60	60	60	60	70	90	120

The contents are subject to change without prior notice! 样本参数如有更改恕不另行通知!

Q11 系列机械式剪板机 Q11 SERIES SHEARING MACHINE



Q11-3 × 1200 plate
Q11-3 × 1300 剪板机
Q11-3 × 1500

Q11A-4 × 2000 plate
Q11A-4 × 2500 剪板机

● Q11系列机械剪板机结构简单，基本采用抵抗键形式离合器结构和开式齿轮传动，并采用较先进电器（脚踏开关）操作，噪音小，操作维护方便。6x2500以下规格为下传动，其余均为上传动。

● Q11 series of mechanical shears are simple structure, the basic form of key resistance using the clutch and open gear transmission structure, and adopts advanced appliances (foot switch) operation, low noise, easy operation and maintenance. Under the model 6x2500 is underdrive, the rest model is upper transmission.

规格 Model	可剪最大板厚 Max cutting Thickness(mm)	可剪最大板宽 Max cutting Width(mm)	行程次数 No. of strokes (rpm)	剪切角度 Rake angle (°)	后档料距离 Adj. Distance of back gauge(mm)	主电机功率 Power of main motor (kw)	外形尺寸 Overall dimension (mm)
3 × 1200	3	1200	20	2° 25'	350	3	2015 × 1500 × 1300
3 × 1300	3	1300	20	2° 25'	350	3	2115 × 1500 × 1300
3 × 1500	3	1500	20	2° 25'	350	3	2515 × 1500 × 1300
4 × 2000	4	2000	20	1° 30'	500	5.5	3200 × 1300 × 1610
4 × 2500	4	2500	20	1° 30'	500	5.5	3580 × 1300 × 1610
4 × 3200	4	3200	20	1° 30'	600	7.5	4380 × 1900 × 1600
4 × 4000	4	4000	20	1° 30'	600	7.5	4650 × 1820 × 1700
6.3 × 2000	6.3	2000	24	2°	500	7.5	3180 × 1765 × 1550

The contents are subject to change without prior notice! 样本参数如有更改恕不另行通知!

电动剪板机 Electric Shearing Machine



● 本机采用全钢焊接结构，闸式下传动剪切原理，链条传动，电机自带刹车，不剪切不耗电，适合于3毫米以下的普通钢板剪切加工。

● The machine is overall steel-welded and gate-type with chain drive. The motor has its own brake, which means no power consuming when not shearing. It's suitable for processing sheet metal less than 3mm in thickness.

型号 Model	可剪板厚 Shear plate thickness mm	可剪板宽 Shear plate width mm	行程次数 Number of strokes /min	功率 Power kw	外形尺寸(mm) Dimensions L'W'H
Q11-3X1600	3	1600	30	4.5	2300 × 900 × 1250
Q11-3X2000	3	2000	30	5.5	2700 × 900 × 1250
Q11-2X2500	2	2500	30	5.5	3200 × 900 × 1250

样本参数如有更改恕不另行通知!
The contents are subject to change without prior notice!

全自动等离子切割机 Automatic plasma cutting machine



性能特点

- 1、独特的割墙调高装置，避免割枪头与铁板接触产生粘板现象，滚动摩擦使运行更加平稳，大大提高切割速度。
- 2、采用专用风管展开软件，自动生成图纸、导出加工程序。操作人员所需要的就是软件中选择所需要的风管样式，输入所需要的尺寸，然后导出加工程序进行切割就可以了，既方便快捷、又精确实用。

Features

- 1, The unique means to increase the cutting wall, to avoid generating torch head sticking phenomenon and iron board contact rolling friction so run more smoothly, greatly improved cutting speed.
- 2, Using a dedicated duct expand software automatically generates drawings, export processing program. Operators need to do is select the desired software duct style, enter the desired size, and then export the machining program for cutting it, namely convenient, practical and accurate.

(专业版) 配置简述/Brief Configuration



- ★ X、Y轴均采用齿轮齿条传动。X、Y轴运行轨道均采用精密直线圆规，有效地保证了机械运行精度。
- ★ 电脑绘图、程序生产、控制加工无缝配合，一台电脑实现全部功能，省时、省心、省力。
- ★ 机械限位、电子限位装置各一套，让生产无后顾之忧。
- ★ 双边驱动，配置大功率电机、精细驱动器，配合精密机械传动系统，运行速度更快、更稳定，切割效率更高。

★ X, Y axis adopt rack and pinion. X, Y axis orbit using precision linear compasses, effectively ensure the accuracy of machine operation.

★ Computer graphics, program production, control and processing seamlessly with a computer to achieve full functionality, save time, worry, and effort.

★ Mechanical limit, the electronic device to a set limit, so no worries production.

★ Bilateral drive, the configuration of high-power motor, fine points of the drive, with great precision mechanical actuation system, run faster, more stable, higher cutting efficiency.

技术参数/Technical Parameters

切割电压 Cutting Voltage	380 ± 10% VAC 50Hz
切割方式 Cutting mode	等离子切割/Plasma Cutting
最小有效切割范围(宽×长)mm Minimum effective cutting range	1000 × 1500
最大有效切割范围(宽×长)mm The maximum effective cutting range	2500 × 6000
最高速度mm/min Maximum speed	120000
切割厚度(等离子)mm Cutting thickness (plasma)	视等离子电源而定(0.3—40mm) Depending on plasma power may be (0.3—40mm)
运行精度 Flaming accuracy	± 0.2mm/m
控制方式 control method	U盘传输、专用数控系统 U disk transmission, special NC system
传动方式 transfer method	齿轮、齿条、圆轨/Gear, rack, circular orbit

操作流程/Operation procedure





手动折边机 Manual Bending Edge Machine

手动折边机是现代薄板钣金加工中的设备之一，专业用于薄板的折弯加工，具有重量轻、操作简单、搬运方便，更适合短期临时工地现场折弯加工，可在任何环境中使用。长度可根据客户定做。

Manual folding machine is one of the modern equipment for thin sheet metal processing, professional for the bending process of thin plates, with light weight, simple operation, convenient transportation, more suitable for short-term temporary site bending processing, can be used in any environment. The length can be customized according to customer.

型号	最小折弯角(°)	重量(kg)	加工板厚(mm)	最大加工长度(mm)	外形尺寸(mm)		
					长L	宽W	高H
WS-1.5 × 1300	60	360	0.3-1.5	1300	1980	800	1320
WS-1.5 × 1500	60	380	0.3-1.5	1500	2180	800	1320
WS-1.5 × 2000	60	440	0.3-1.5	2000	2680	800	1320
WS-1.5 × 2500	60	560	0.3-1.5	2500	3180	800	1320
WS-1.2 × 3000	60	680	0.3-1.2	3000	3680	800	1590

The contents are subject to change without prior notice! 样本参数如有更改恕不另行通知!



气动折边机 Pneumatic Folding Machine

气动压紧、气动折边，无需电源。
自动模式、高效省力，是风管折方理想的选择。

Pneumatic compressing and folding.
With the features of auto-mode and high efficiency, it is the best choice for duct folding.

型号	折板能力(mm)	折板最小角度(°)	开距(mm)	额定气压(Mpa)	重量(kg)
QS-1.5 × 1000	1.5 × 1020	80	60	0.6	320
QS-1.5 × 1300	1.5 × 1310	80	60	0.6	360
QS-1.5 × 1500	1.5 × 1515	80	60	0.6	380
QS-1.0 × 2000	1.0 × 2020	80	60	0.6	460
QS-1.0 × 3000	1.0 × 3000	80	60	0.6	750
QS-0.8 × 2500	0.8 × 2525	80	60	0.6	560

The contents are subject to change without prior notice! 样本参数如有更改恕不另行通知!



电动角铁卷圆机 Electric Angle crimping machine

角铁卷圆机根据不同的需要更换轧辊，可卷角铁，扁铁，圆管，槽钢，方通等等。三轧辊在工作时可调校轧辊间隙，节省材料。

Angle crimping machine can be replaced according to the needs of different roll, roll Angle iron, flat iron, pipe, channel steel, rectangular tube, etc. Three roll can be set-up at work roll gap, material saving.

项目 Item	型号 Model	JY-40	JY-50
屈服系数 Yield limit		≤245	≤245
最小卷圆直径 Minimum beading Dia		200-400	300-400
角铁功能 (Angle steel leg out)		∠40 × 4	∠50 × 5
机械外型 Model size	L mm	820	900
	W mm	790	760
	H mm	1000	1100
重量 Weight		370	400
主电机 Main motor		kw	1.5

The contents are subject to change without prior notice! 样本参数如有更改恕不另行通知!

卧式虾米弯头机 Horizontal Shrimp Bend Machine



◆加工厚度 ≤ 1.0mm

成型状

◆Thickness ≤ 1.0mm

Molded shape

◆虾米弯头机用于圆管弯头的接口造型与缝合，使行业制作难题变得轻松自如。

◆Shrimp elbow pipe elbow machine interfaces for modeling and commissure, enable easier the produce problems.

名称	特性与规格
工作能力	加工厚度 ≤ 1.0mm 直径 ≤ 1000mm 主轮转速 7r/min
电动机	Y90L-4型 280V 1.5kw H=1400r/min
外形尺寸	长 × 宽 × 高: 1450mm × 70mm × 930mm
自重	400kg

The contents are subject to change without prior notice! 样本参数如有更改恕不另行通知!



校平压筋机 Leveler Grooving Machine

主要技术参数:

适用最大板厚度: 1.2mm

最大卷板宽度: 1300mm

生产效率: 10m/min

设备动力: 1.5kw

重量: 910kg

The main technical parameters:

Maximum applicable thickness: 1.2mm

Maximum coil width: 1300mm

Productivity: 10m / min

Equipment power: 1.5kw

Weight: 910kg

型号	加工板厚度(mm)	加工板宽度(mm)	电机功率(kw)	重量(kg)	外形尺寸L × W × H(mm)
JXP-1300	0.5-1.2	1300	2	1300	1540 × 1270 × 1100

The contents are subject to change without prior notice! 样本参数如有更改恕不另行通知!



五线(七线)压筋机 Five Line (Seven Lines) And Beading Machine

五线(七线)压筋机用于制作风管加强筋，可一次性压五条或七条平行筋。

The five line (seven lines) and beading machine for wind pipe stiffener, disposable pressure five or seven parallel bars.

型号	加工板厚度(mm)	加工板宽度(mm)	电机功率(kw)	重量(kg)	外形尺寸L × W × H(mm)
G1.2 × 1300B	0.5-1.2	1300	1.5	400	1550 × 1050 × 1170
G1.2 × 2000B	0.5-1.2	2000	1.5	600	2350 × 1050 × 1300

The contents are subject to change without prior notice! 样本参数如有更改恕不另行通知!

多功能咬口机 Multi-function Locking Machine

● 技术改进型

所有咬口机主要传动部件均采用优质品牌“深沟滚珠轴承”安装，非传统“滚针轴承”，更有效的保证全天候长期使用。

咬口机是现代风管制作行业必不可少的设备之一，规格有：SA-12、SA-12B、SA-12HB、SA-15、SA-15B、SA-15HB等，具有操作简单、快捷、搬运方便等特点。规格齐全、大大的满足了您的需求。配备我公司的：共板法兰机、五线压筋机（校平压筋机）、共板折边机、脚踏剪板机（电动剪板机）等，形成简易风管加工生产线，解决您的后顾之忧，具有速度快、周期短、合格率高、节约成本等特点。

让您以最短的工期迎接下一个工程。

● Technological Innovation

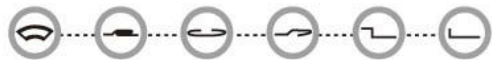
The transmission parts of the locking machine adopts the deep groove ball bearing instead of needle bearing to ensure the long-term usage.

Locking machine is one of the modern duct manufacture industry indispensable equipment, specifications are: SA-12, SA-12B, SA-12HB, SA-15, SA-15B, SA-15HB and so on, has the characteristics of the operation is simple, fast and convenient. Complete specifications, greatly satisfy the needs of you. Equipped with my company: a total of flange machine, five line embossing machine (levelling embossing machine), a total of plate folding machines, foot shearing machine (such as electric cutting machine), form a simple duct processing production line, solve your worries, with fast speed, short cycle, high pass rate, cost saving, etc.

Let you end a project in the shortest time and for the next.



型号 Model	功率 Power (Kw)	加工板厚 Thickness (mm)	重量 Weight (kg)	尺寸 L x W x H (mm)
SA-12HB	1.5	0.5-1.2	230	1040 x 580 x 820
SA-15HB	2.2	0.8-1.5	250	1200 x 700 x 1000



全自动风管生产3线 Auto duct line 3

性能特点

●全自动风管生产3线是一款高性价比设备，非常适用于共板法兰（TDF）、角钢法兰以及插接式法兰（TDC）的混合生产。角钢法兰和插接式法兰风管可以在线自动折成方管。制系统中英文语言可以任意转换。最大进料速度为15 mm/min，长度误差为±0.5mm，对角线误差为±0.8mm。

Features

●Automatic wind pipe production line 3 is a cost-effective equipment, very suitable for flange (TDF), and angle steel flange flange (TDC) hybrid production. Angle flange and flange duct could automatically folded into square. System in English language can be arbitrary conversion. The maximum feed rate is 15 mm/min, the length error is ±0.5mm, the diagonal error is ±0.8mm.

基本配置/Basic equipment

料架一台（2个料盘，最大承重6吨）
A material frame (2 coils; the max loading per coil is 6 tons)
导料架一个
A transmission frame
主机一套
A main machine
电脑控制系统一套
A CNC System

订购编码 NO.	型号 Model	加工板厚 Capacity in mild-steel thickness range (mm)	最大加工 板宽 Max-width (standard) (mm)	最大进料 速度 Max-working speed (m/min)	卷料最大 重量 Coiler max-weight (Kg)	外形尺寸 Dimensions(mm)			总功率 Power (Kw)	重量 Weight (Kg)
						长 L (mm)	宽 W (mm)	高 H (mm)		
HD03-1	HD-3-1250	0.5-1.2	1250	15	6000	2200	1800	1300	10	4500
						2500	1800	1500		
HD03-2	HD-3-1530	0.5-1.2	1530	15	6000	2200	2000	1300	12	5000
						2500	2200	1500		

共板法兰机 TDF Flange Forming Machine

性能特点

●共板法兰成型机按工作性能分为三种型号：TDF-12、TDF-15和双机联动共板法兰成型机2-TDF-12、TDF-12、TDF-15为一侧工位成型共板式法兰边“┌”，另一侧工位成型勾码“┐”；双机联动共板法兰成型则两侧工位同时成型“┌┐”，所成形的法兰质量好，效率高，宽度可在300-1530mm之间调整。

Features

●The TDF flange manufacture system can be divided into three models:TDF-12,TDF-15 and duplex TDF flange manufacture system 2-TDF-12.The TDF-12 and TDF-15 produce "┌" shaped flange on one side and "┐" shaped flange clamp on the other side.The duplex TDF flange manufacture system produces "┌┐" shape on both All the four models works at 6m/min,the stiffener can be removed as per customer's request.



●角码模具（需另订制）

专业配套共板法兰机使用，生产法兰成型机的连接角码，分“下料模和成型模”；配合25-40T冲床使用。
A total professional support plate flange machine, flange forming machine production joint angles code division "die cutting and molding"; with 25-40T punch use.



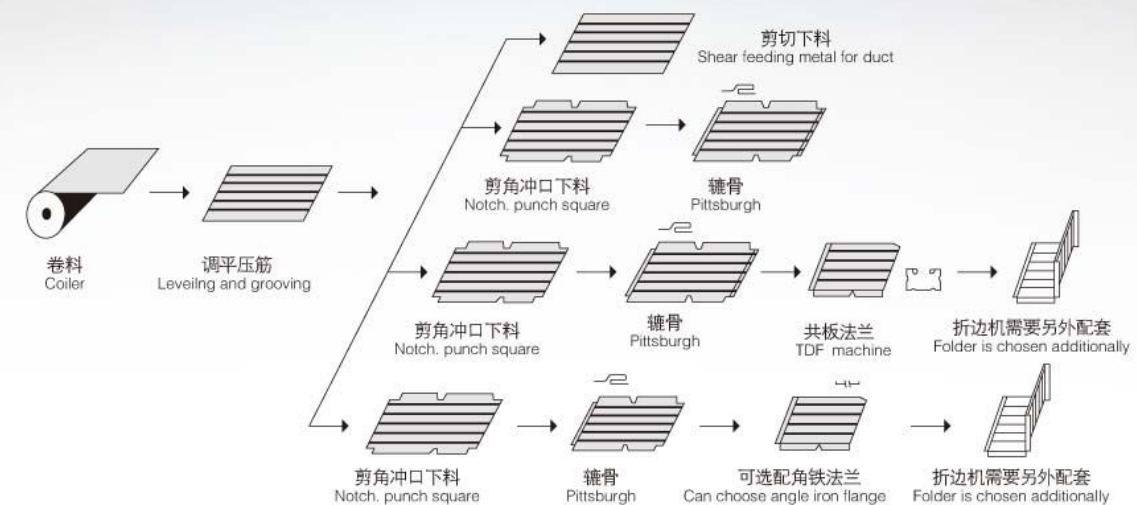


风管生产四线 Duct Manufacturing Auto Line IV

风管生产四线是直线型结构，由上料架，调平压筋、液压冲尖口和冲方口、液压剪板机，位移式联合角咬口机，机械手定位送料平台，双联动共板法兰机（或者选配单骨角铁法兰机）全自动电脑控制系统组成。冲尖口和冲方口、剪板采用全液压系统。风管生产四线是一款性价比高的设备，占地面积比较小，另外购置一台液压折弯机，非常适合TDF共板法兰，TDC插接式法兰，角铁法兰生产，其最大进料速度为16m/min，长度误差为±0.5mm，电脑控制系统采用闭环反馈，保证稳定精度。

Line IV is linear structure, consists of a metal frame, leveling beading, hydraulic notch and punch square, hydraulic shears, displacement type joint angle nipping machine, feeding platform to position the manipulator, double linkage flange machine (or optional single bone angle iron flange) full automatic computer control system. Blunt notch and punch square, shear plate adopts full hydraulic pressure system. Line C6 is a cost-effective equipment wind pipe, covers an area of relatively small, in addition to the purchase of hydraulic bending machine, very suitable for TDF flange, TDC plug-in flanges, flange angle iron production, the maximum feed speed is 16m/min, the length error of ±0.5mm, computer control system adopts closed-loop feedback, guarantee stable precision.

工作示意图 WORKING SCHEMATIC DIAGRAM



基本配置 BASIC EQUIPMENT

- 电动送料架两台 (3000 × 1900 × 950mm × 2)
 - 调平、压筋、冲尖口、方口模具、剪板机一台
 - 位移式联合角弯骨机一台
 - 电动送料平台一个
 - 双联动共板法兰机一台
 - 双联动单骨法兰机一台
 - 电脑控制系统及生产软件一套
- Electric feeding rack two (3000 · 1900 · 950mm · 2)
 - Leveling, beading, punch, die opening, cutting plate machine a
 - Displacement type joint angle reel bone machine
 - An electric feeding platform
 - Double linkage flange machine
 - Double linkage single bone flange machine
 - Computer control system and a set of software production

技术参数 TECHNICAL DATA

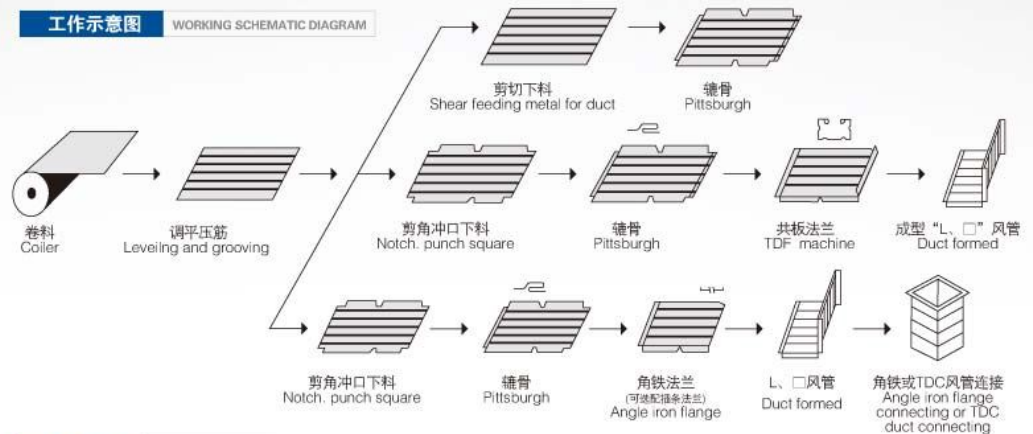
型号 Model	加工板厚 Thickness range (mm)	加工宽度 Width (mm)	最大进料速度 Max-working speed (m/min)	卷料承重 Coiler weight (kg)	重量 Weight (kg)	外形尺寸 Dimension (mm)
BDJL-IV	0.5-1.2	1300	16	6000 × 2	7500	12000 × 3500 × 1300
		1600			8000	12000 × 3800 × 1300

备注：重量与外形尺寸不含两个上料架参数。可根据客户要求订做各种规格板料、板宽，卷料重量的产品。
Note: The weight and size of two feeding shelf are not included. Customers can order the line with different sheet specifications, sheet width and coiler weight.

风管生产五线 Duct Manufacturing Auto Line V

风管生产四线是直线型结构，由上料架，调平压筋、液压冲尖口和冲方口、液压剪板机，位移式联合角辊压机，机械手定位送料平台，双联动共板法兰机（或者选配单骨角铁法兰机）全自动电脑控制系统组成。冲尖口和冲方口、剪板采用全液压系统。风管生产四线是一款性价比高的设备，占地面积比较小，另外购置一台液压折弯机，非常适合TDF共板法兰，TDC插接式法兰，角铁法兰生产，其最大进料速度为16m/min，长度误差为±0.5mm，电脑控制系统采用闭环反馈，保证稳定精度。

Line IV is linear structure, consists of a metal frame, leveling beading, hydraulic notch and punch square, hydraulic shears, displacement type joint angle rimping machine, feeding platform to position the manipulator, double linkage flange machine (or optional single bone angle iron flange) full automatic computer control system. Blunt notch and punch square, shear plate adopts full hydraulic pressure system. Line IV is a cost-effective equipment wind pipe, covers an area of relatively small, in addition to the purchase of hydraulic bending machine, very suitable for TDF flange, TDC plug-in flanges, flange angle iron production, the maximum feed speed is 16m/min, the length error of ±0.5mm, computer control system adopts closed-loop feedback, guarantee stable precision.



基本配置

- 电动送料架两台 (3000 × 1900 × 950mm × 2)
 - 调平、压筋、冲尖口、方口模具、剪板机一台
 - 位移式联合角辊骨机一台
 - 电动送料平台一个
 - 双联动共板法兰机一台
 - 双联动单骨 (角铁法兰) 成型机一台
 - 伺服送料平台一个
 - 液压折弯机一台
 - 电脑控制系统及生产软件一套
 - 电柜一个
- Electric feeding rack two (3000 * 1900 * 950mm * 2)
 - Leveling, beading, punch, die opening, cutting plate machine a
 - Displacement type joint angle reel bone machine
 - An electric feeding platform
 - Double linkage flange machine
 - A double linkage single bone (angle iron flange machine) machine
 - A servo feeding platform
 - Hydraulic bending machine
 - A set of computer control system and software production
 - An electrical cabinet

技术参数

型号 Model	加工板厚 Thickness range (mm)	加工宽度 Width (mm)	最大进料速度 Max-working speed (m/min)	卷料承重 Coiler weight (kg)	重量 Weight (kg)	外形尺寸 Dimension (mm)
SDJL-V	0.5-1.2	1300	16	6000 × 2	9500	18000 × 3500 × 1300
		1600			10000	18000 × 3800 × 1300

备注：重量与外形尺寸不含两个上料架参数。可根据客户要求订做各种规格板料、板宽，卷料重量的产品。
Note: The weight and size of two feeding shelf are not included. Customers can order the line with different sheet specifications, sheet width and coiler weight.



Q35Y 系列液压联合冲剪机

Q35Y SERIES HYDRAULIC COMBINED PUNCHING AND SHEARING MACHINE

性能特点

●采用液压传动，是目前国内联合多功能冲剪机最新产品，能对板钢，方钢，圆钢，角钢，槽钢，工字钢进行剪切，冲孔，模剪，并配备剪切挡料装置。

Features

●Using hydraulic transmission, is China's currently latest Multi-function United punching machine products, can plate steel, square steel, round steel, angle steel, channel steel, I-beam to cut, punch, shear modulus and shear block device is equipped with.

工字钢、槽钢，则需特殊订货
I-beam and channel steel, it would take special orders

型钢种类 Profile	圆钢 Round Bar	方钢 Square Bar	等边角钢 Equal Angle 90° 剪切 90° Shearing	45° 剪切 45° Shearing	T型钢 T-Bar 90° 剪切 90° Shearing	45° 剪切 45° Shearing	工型钢 I-Beam	槽钢 Channel
断面 Section View								
Q35Y-12	35	30×30	100×100×8					
Q35Y-16	45	40×40	125×125×12	70×70×8	120×120×12	80×80×8	126×74×5	126×53×5.5
Q35Y-20	50	50×50	140×140×12	70×70×10	140×140×12	70×70×10	160×86×6	160×60×6.5
Q35Y-25	60	50×50	160×160×14	80×80×7	160×160×14	80×80×10	200×102×9	200×75×9
Q35Y-30	65	55×55	180×180×16	80×80×10	180×180×16	80×80×10	280×124×10.5	280×86×11.5
Q35Y-40	70	60×60	200×200×18	80×80×10	200×200×18	100×100×10	300×130×13	300×86×11.5

型号 Model	压力 Punching Pressure (T)	可剪最大板厚 Max. cutting thickness of steel plates (mm)	板料强度 Plate strength (N/mm ²)	剪切角 Angle of Shear (°)	一次行程剪板尺寸 (长×宽) A trip size (L × W) (mm)	滑块行程 Slider trip (mm)	行程次数 Trips frequency (times/min)	喉口深度 Throat depth (mm)	冲孔厚度 Punch depth (mm)	最大冲孔直径 Max. punching diameter (mm)	主电机 Main Motor Power (KW)	外形尺寸 (长×宽×高) Overall dimensions (L × W × H) (mm)
Q35Y-12	35	12	≤450	7°	300×12	35	10-18	115	12	25	4	950×550×1800
Q35Y-16	60	16	≤450	7°	16×250 8×400	80	9-25	300	16	25	4	1640×730×1770
Q35Y-20	90	20	≤450	8°	20×330 10×480	80	10-28	355	20	30	7.5	1860×800×1900
Q35Y-25	120	25	≤450	8°	25×330 16×600	80	9-18	400	25	35	7.5	2355×960×2090
Q35Y-30	160	30	≤450	8°	30×335 20×600	80	7-16	600	26	38	11	2680×1100×2300
Q35Y-40	200	40	≤450	8°	40×335 30×600	100	6-16	530	35	40	18.5	2900×1150×2500

The contents are subject to change without prior notice! 样本参数如有更改恕不另行通知!

液压单头冲孔机

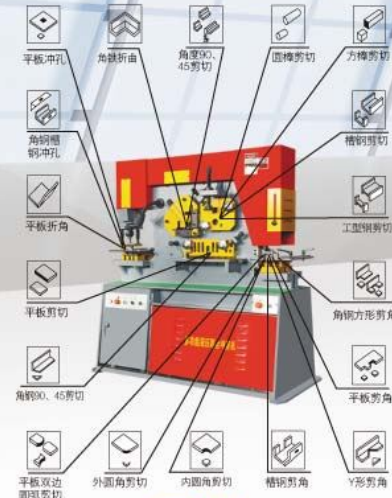
SINGLE HEAD HYDRAULIC PUNCHING MACHINE

型号	Model	Q25Y-60T	Q25Y-90T	Q25Y-120T	Q25Y-160T	Q25Y-200T	Q25Y-250T
压力(T)	Punching Pressure	60	90	120	160	200	250
板料强度(N/mm ²)	Material strength	≤450	≤450	≤450	≤450	≤450	≤450
滑块行程(mm)	Max. length of cylinder stroke	80	80	90	100	110	200
冲孔行程次数(times/min)	Trips frequency	10-20	12-22	8-18	6-16	6-16	6-16
冲孔板厚(mm)	Punching Thickness	16	20	25	30	35	40
最大冲孔直径(mm)	Max. punching diameter	25	30	35	38	40	45
喉口深度(mm)	Depth of throat	300	335	480	600	535	600
主电机(KW)	Motor Power	5.5	7.5	11	15	18.5	18.5
外形尺寸(长×宽×高)(mm)	Overall dimensions	1400×700×1700	1600×800×1800	1800×960×2000	2000×1050×2450	2200×1050×2450	2600×1440×2500

The contents are subject to change without prior notice! 样本参数如有更改恕不另行通知!



Q35Y-20
液压联合冲剪机



液压单头冲孔机



W11 系列机械对称式三辊卷板机

W11 SERIES MECHANICAL SYMMETRY TYPE THREE ROLLER BENDING MACHINE



W11系列机械对称式三辊卷板机技术参数

Series W11 Mechanical Symmetry Type Three Roller Bending Machine parameters

规格型号 Specification	最大卷板厚度 Max Thickness of Coiled Plate mm	最大卷板宽度 Max Width of Coiled Plate mm	板材屈服极限 Yielding Limit of Sheet Metal mpa	卷板速度 Coiling Speed m/min	满载最小卷板直径 Min Full Loading Diameter of Coiled Plate mm	上辊直径 Diameter of Top Shaft mm	下辊直径 Diameter of Bottom Shaft mm	下辊中心距 Central Distance between Bottom Shafts mm	主电机功率 Motor Power kw
W11-6 × 1500	6	1500	245	7.16	380	180	170	210	4
W11-6 × 2000	6	2000	245	7.16	380	180	170	210	5.5
W11-6 × 2500	6	2500	245	7.16	500	190	170	260	5.5
W11-6 × 3200	6	3200	245	6.46	500	240	200	310	7.5
W11-8 × 2000	8	2000	245	7.16	450	190	170	260	7.5
W11-8 × 2500	8	2500	245	6.46	500	240	200	310	11
W11-12 × 2000	12	2000	245	6.46	500	240	200	310	11
W11-12 × 2500	12	2500	245	5	750	280	240	360	11
W11-12 × 3000	12	3000	245	5	650	280	240	360	11
W11-16 × 2000	16	2000	245	5	750	300	240	360	11
W11-16 × 2500	16	2500	245	5	750	330	240	360	11
W11-16 × 3000	16	3000	245	5	900	340	280	440	11
W11-20 × 2000	20	2000	245	5	750	280	240	440	11
W11-20 × 2500	20	2500	245	5	850	340	280	490	15
W11-25 × 2000	25	2000	245	5	850	340	280	490	22
W11-25 × 2500	25	2500	245	4.5	900	380	300	600	30
W11-30 × 2000	30	2000	245	4.5	900	380	300	600	30
W11-30 × 2500	30	2500	245	4.3	1100	460	380	600	37
W11-30 × 3000	30	3000	245	5	1200	480	400	600	37
W11-30 × 3200	30	3200	245	5	1200	500	400	600	37
W11-40 × 2000	40	2000	245	5	1200	480	400	600	37
W11-40 × 2500	40	2500	245	5	1400	500	400	600	37
W11-40 × 3000	40	3000	245	4.37	1600	500	400	350	45
W11-50 × 3000	50	3000	245	4	2000	600	480	700	60
W11-60 × 3000	60	3000	245	4	2000	700	560	800	75

The contents are subject to change without prior notice! 样本参数如有更改恕不另行通知!

W11S 系列上辊万能式卷板机

W11S SERIES UPPER ROLLER UNIVERSAL BENDING MACHINE



性能特点:

高精度的端部预弯;
NC控制, 高的生产效率;
制品精度超群
作业的安全
整体式结构, 基础简单移动方便
不同的用途, 相应的控制方法
丰富的弯曲形状

Features:

High-precision end pre-bending;
NC control, high production efficiency;
Superior products accuracy
Work security
monolithic structure, simple base and convenient move.
Multiple using with correspondent control
Rich in bending shape

W11S系列上辊万能式卷板机技术参数

Series W11S Upper Roller Universal Bending Machine technical parameters

参数名称 (规格型号)	最大卷板厚度 mm	最大预弯厚度 mm	最大卷板宽度 mm	上辊直径 mm	下辊直径 mm	下辊中心距 mm	主电机功率 kw	液压电机功率 kw
W11S-12X2000	12	10	2000	255	150	245	7.5	4
W11S-12X2500	12	10	2500	300	165	270	11	5.5
W11S-12X3200	12	10	3200	320	180	300	15	5.5
W11S-16X2000	16	12	2000	300	165	270	11	5.5
W11S-16X2500	16	12	2500	320	180	300	15	5.5
W11S-16X3200	16	12	3200	380	200	330	22	7.5
W11S-20X2000	20	16	2000	320	180	300	15	5.5
W11S-20X2500	20	16	2500	380	220	360	22	7.5
W11S-25X2000	25	20	2000	380	220	360	22	7.5
W11S-25X2500	25	20	2500	410	235	380	30	11
W11S-30X2000	30	25	2000	410	235	380	30	11
W11S-30X2500	30	25	2500	460	260	420	37	15
W11S-30X3000	30	25	3000	480	260	420	37	15
W11S-30X3200	30	25	3200	510	275	460	45	15
W11S-30X4000	30	25	4000	590	290	500	45	22
W11S-40X2000	40	35	2000	480	260	420	37	22
W11S-40X2500	40	35	2500	520	290	500	55	22
W11S-40X3000	40	35	3000	560	290	500	55	22
W11S-40X4000	40	35	4000	610	360	650	75	30
W11S-50X3200	50	40	3200	610	360	700	75	30
W11S-50X4000	50	40	4000	700	380	700	90	30
W11S-60X3000	60	50	3000	650	380	700	75	30
W11S-60X4000	60	50	4000	780	440	820	110	37
W11S-60X5000	60	50	5000	850	460	880	110	37
W11S-70X3000	70	70	3000	710	420	780	75	37
W11S-80X2500	80	70	2500	710	420	780	75	37
W11S-80X3000	80	70	3000	770	460	880	90	37
W11S-90X3000	90	80	3000	825	480	920	110	45
W11S-100X3000	100	90	3000	860	520	1000	110	45
W11S-120X3000	120	110	3000	960	600	1120	160	75

The contents are subject to change without prior notice! 样本参数如有更改恕不另行通知!